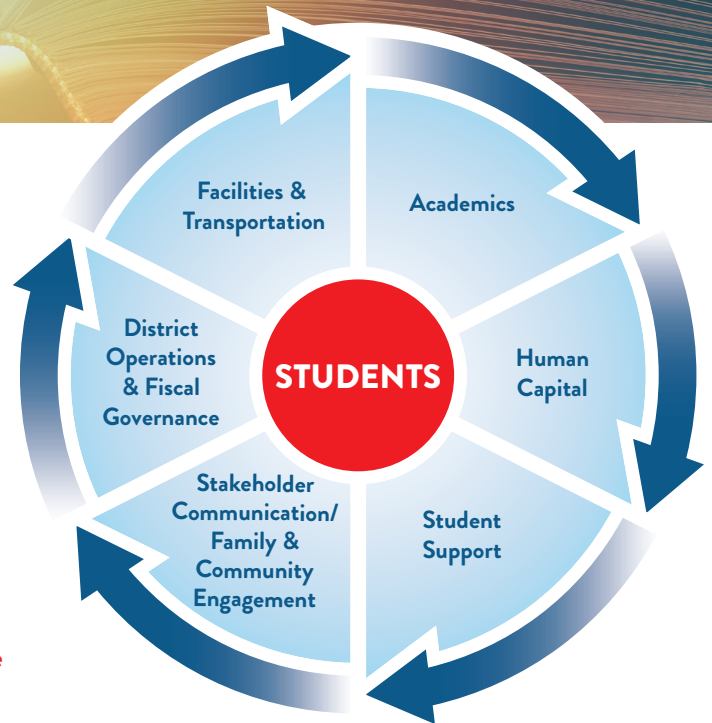


# ARKANSAS

## READY FOR LEARNING

**W**e believe learning can happen anytime, anywhere. The COVID-19 pandemic put this belief to the test, and we are resolute in our commitment to the continuity of learning. Our **vision** to transform Arkansas to lead the nation in student-focused education is unwavering. In fact, it is more important now than ever before. As described in the Arkansas ESSA Plan, the Division of Elementary and Secondary Education remains committed to the established process of continuous improvement through the six principal systems of public education. In the wake of COVID-19, Arkansas schools are now challenged to reassess their school and district plans. Arkansas has a strong foundation, and we have identified three key factors necessary for Arkansas to be *Ready for Learning*: **blended learning, guaranteed and viable curriculum, and a student-focused approach.**



### BLENDING LEARNING

Going forward, all Arkansas schools will implement blended learning systems that deliver curriculum, instruction and assessment through multiple methods. This type of system incorporates both on-site teacher interaction and off-site instruction, including new content, through streamed or uploaded lessons and activities if extended school closures become necessary. Building a statewide system of blended learning will ensure that all K-12 students are connected to high quality instruction and engagement, regardless of location.

### SCHOOL-LEVEL PLANS & DISTRICT SUPPORT

We should all prepare for a very different 2020-21 school year. To ensure learning continues throughout the year, even remotely, Arkansas schools will use the established school-level planning process, Plan-Do-Check. Our state's accountability and support system already includes a process for school-level planning and district support. That process offers flexibility for schools to continually revise plans and adjust day-to-day operations to ensure that student needs are being met. These plans outline expectations and provide communication for the public.



DIVISION OF ELEMENTARY  
& SECONDARY EDUCATION

This statewide system will be much more than just a response to COVID-19. In the long term, we can use it to accelerate Arkansas toward flexible learning models, develop curriculum resources for schools and provide training for parents on how to best assist students. Learn more at [dese.ade.arkansas.gov](https://dese.ade.arkansas.gov).