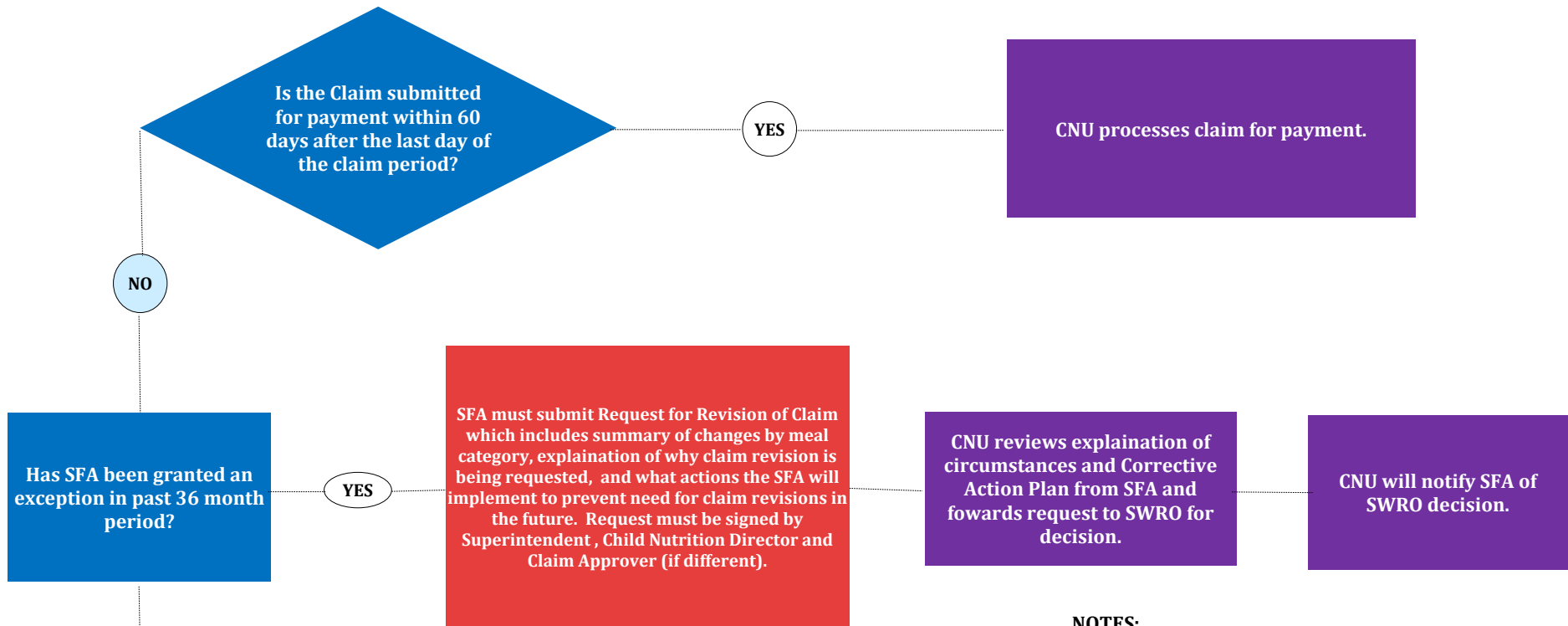


# Original Claim Approval Processing - 60/90 Day Guidance



**NOTES:**

Questions to determine if claim can and should be adjusted.

SFA action steps.

CNU actions steps.

Informational

Underclaim = SFA claimed less meals than served.

Overclaim = SFA claimed more meals than served.

SFA = School Food Authority

CNU = Child Nutrition Unit

SWRO = Southwest Regional Office, USDA