



District Literacy Support Plan 2021






Today's Goal

To have a better understanding of how to create a district literacy support plan that is a working document for the district and aligns to the school improvement plans.





**AESAA and
Act 83 of 2019
requires that
EVERY
school building has
a School
Improvement Plan**



Act 83 - School Level Improvement Plans

School Improvement Plans

- Submitted to district for approval by May 1
- Posted on district website by August 1
- **Include a literacy plan**
 - Curriculum program
 - Professional development program
 - Aligned with school literacy needs
 - Based on Science of Reading





Literacy Plan Guidance

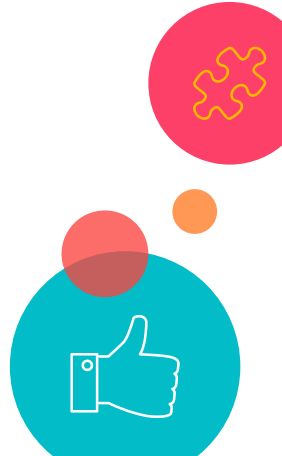
- How are these curriculum considerations addressed in your school improvement plans?
 - Tier I Literacy Curriculum
 - Secondary Courses
 - Rationale for literacy components that are missing or not aligned to SoR
 - [Literacy Support Plan Guidance](#)





Literacy Plan Guidance

- How are these professional development considerations addressed in your school improvement plan?
 - PD regarding new curriculum
 - Continuing PD on SoR
 - Prescriptive PD based on observations





Science of Reading Professional Development

● Proficiency

- What pathway?
 - K-6 Core, K-12 SPED, K-6 ELL, Reading Specialist
 - K-2 RISE, 3-6 RISE
 - Other [pathways](#)
 - What supporting /coaching do you have in place to ensure implementation?
 - Have those coaching teachers been trained in the same pathway?
 - Do teachers have the proper resources and materials to be able to implement Science of Reading effectively?
 - Does your schedule have adequate time to teach all components as described in the training?

● Awareness

- How are you supporting 7-12 teachers in the science of reading?
- Are they equipped to provide reading instruction to those struggling in their content classes?
- What support/coaching do you have in place to support teachers?
- Does your schedule have time built in for teachers to support struggling readers?

● How are you monitoring?



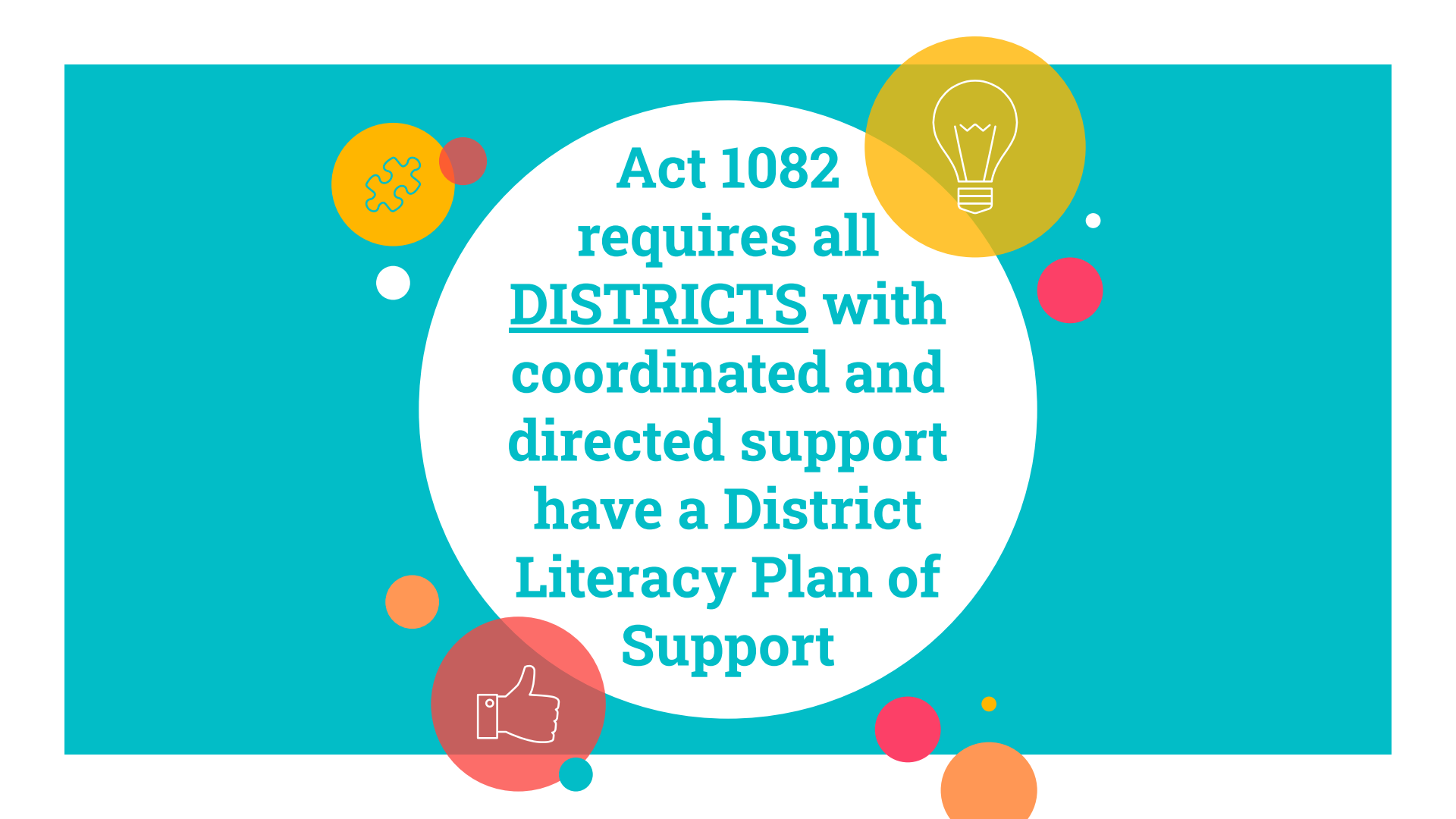


AR Education Support and Accountability Act (AESAA) Required in Legislation

8

- Annually, a school shall engage stakeholders to develop or revise the school improvement plan
- Must be submitted to the district by May 1 for district and board approval
 - Superintendent should review plans to ensure PD and Curriculum are addressed
- Posted on website by August 1
- Plan should follow a continuous cycle of inquiry





**Act 1082
requires all
DISTRICTS with
coordinated and
directed support
have a District
Literacy Plan of
Support**



Act 1082

Level 3 Coordinated Support- 40% or more score of students in the district scored In Need of Support on ACT Aspire Summative for Reading

Level 4 Directed Support - 50% or more of students in the district scored In Need of Support on ACT Aspire Summative for Reading

Support provided by Division of Elementary and Secondary Education, Educational Cooperatives and Educational Partners





Level 3 - Coordinated Support

Coordinated Support:

- Required:
 - District support plan that includes a district literacy plan
 - District support plan shall be approved by ADE
 - Plan will be completed in Indistar
- Optional:
 - Support provided by education service cooperatives
 - DESE provided face-to-face training and support
 - Zoom training





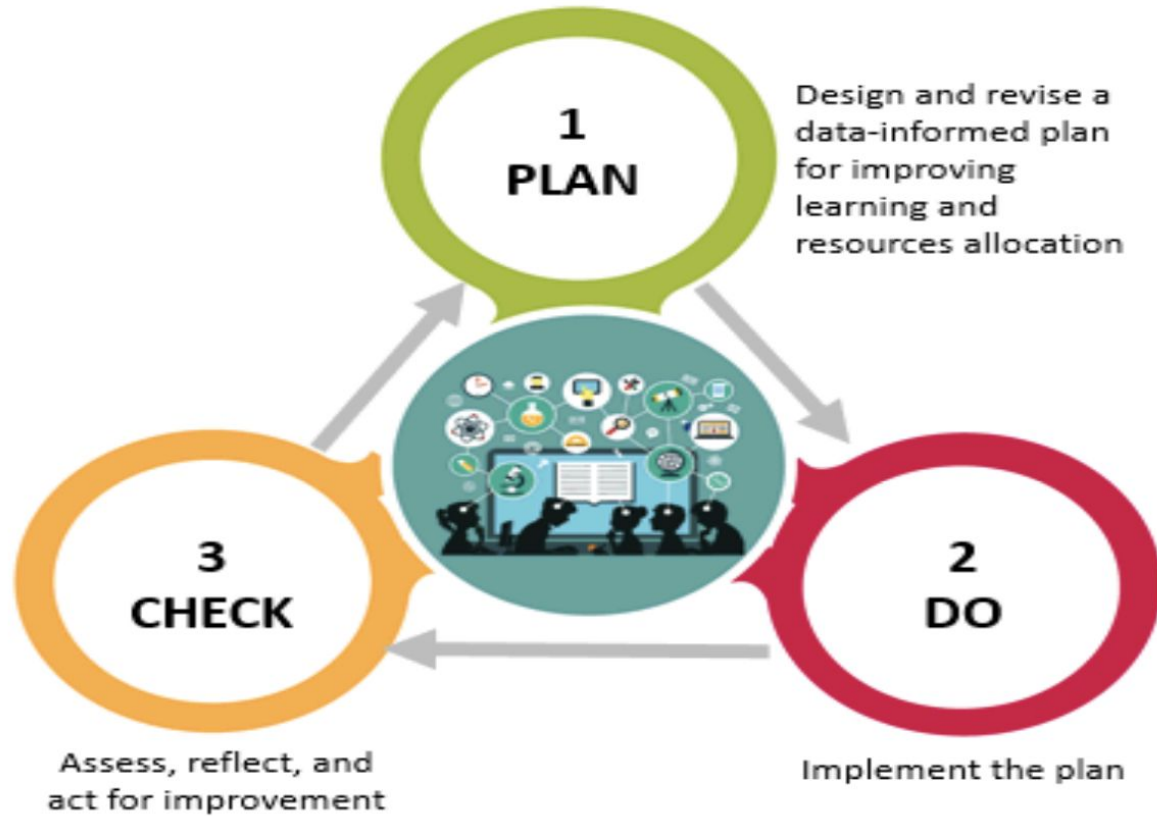
Level 4 - Directed Support

- Required:
 - DESE training
 - District support plan that includes a district literacy plan
 - Shall work with the ADE
 - Plan shall be approved by ADE
 - Plan will be completed in Indistar
- Optional:
 - Support provided by education service cooperatives





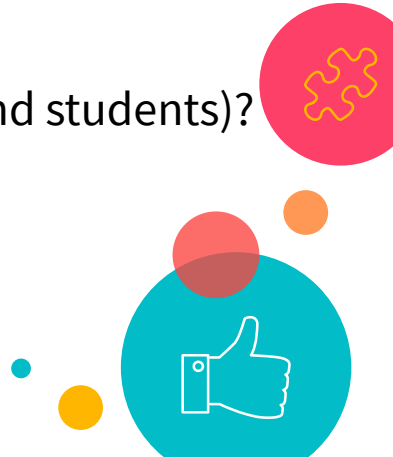
**Steps to consider
for creating
District Literacy
Support Plan**





Step 1: District leadership team should review all school improvement plans

- What has changed due to covid?
 - What did take place?
 - What did not?
 - What needs to be added or deleted?
 - How are you addressing loss of learning (for teachers and students)?
- Has anything else changed?
 - New leadership
 - Opening/closing of buildings





Step 2: Review what's working and what's not

- How do you know?
 - Student Data - academics, behavior
 - Observations - formal and informal





Step 3: Create a district literacy goal based on the review of the school improvement plans

- Consider district changes
- Student Data





Step 4: Align funds to the needs of the school improvement plans

- ESA
- SOAR
- ESSER
- Title Funds
- 1003
- District Funds

Don't forget to upload your budget to the Indistar folder





Step 5: Address how the district plan will be monitored (actions).

- Does the plan clearly state the timeline for implementation?
 - What are the expectations? What evidence?
 - Be specific - NOT “ongoing”
- Does it clearly state who is in charge of the work?
- Change the plan if necessary (timelines, there may be additional purchases, etc.)





Step 6: Address how the district will evaluate the effectiveness of the district support plan

- Who is responsible for evaluating the plan?
- What data will be gathered and when will this data be gathered?
- Monitoring is the evidence that leads to the evaluation of the plan. This can take place throughout the year, not just at the end of year.





Step 7: Submit the Plan

District support plans:

- Submitted to DESE for approval through Indistar by **September 1**.
 - Fillable template-link your plan
- Posted on district website under “State Required Information” **within 10 days of submitting to the DESE**





**DIVISION OF ELEMENTARY
& SECONDARY EDUCATION**