



WSI - High-Poverty/High-Minority Report: 2020-2021

I. Introduction 1
II. Schools, WSI scores - 2020-2021 2
III. Schools - 3-yr WSI scores 2
IV. Schools, High-Poverty, 2020-2021..... 3
V. Schools, High-Minority - 2020-2021 7
VI. Districts, WSI scores - 2020-2021..... 11
VII. Districts - 3-yr WSI scores..... 12
VIII. Districts, High-Poverty - 2020-2021..... 12
IX. Districts, High-Minority - 2020-2021..... 14

I. Introduction

In an effort to evaluate equitable access to effective educators, the Division of Elementary and Secondary Education (DESE) developed the Workforce Stability Index (WSI) for use across the state, specifically in High-Poverty and High-Minority Schools and Districts. Using a High-Poverty (HP) / High-Minority (HM) report, DESE annually provides an update on educator equity gaps. The report contains information on all schools designated as HP and/or HM and their WSI rating. Aligning with the goals of the state’s Equitable Access to Effective Educators Plan, the report assists school districts in identifying inequities and ensuring that all students have equitable access to effective teachers.

The relative stability of an educator workforce can be estimated by examining factors determined to be relevant. The report informs stakeholders of DESE’s progress toward the goal of ensuring access to excellent educators. The Division of Educator Effectiveness provides technical assistance to school districts in order to guide the development of short-term and long-term implementation goals and improvement plans that will address the equity gaps.

WSI is based on the following teacher factors: (a) inexperience (% with less than three years teaching experience), (b) % of teachers teaching out-of-field on ALPs, (c) % of teachers rated as ineffective, and (d) rate of attrition. WSI is calculated at the school, district and state level. The formula for WSI is:

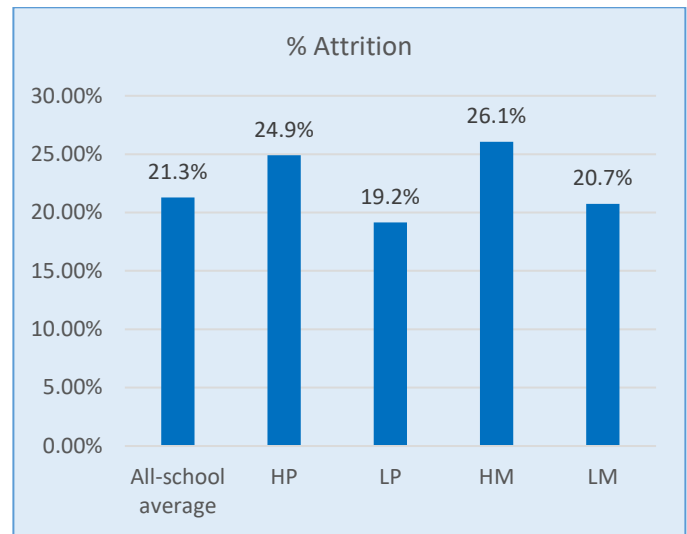
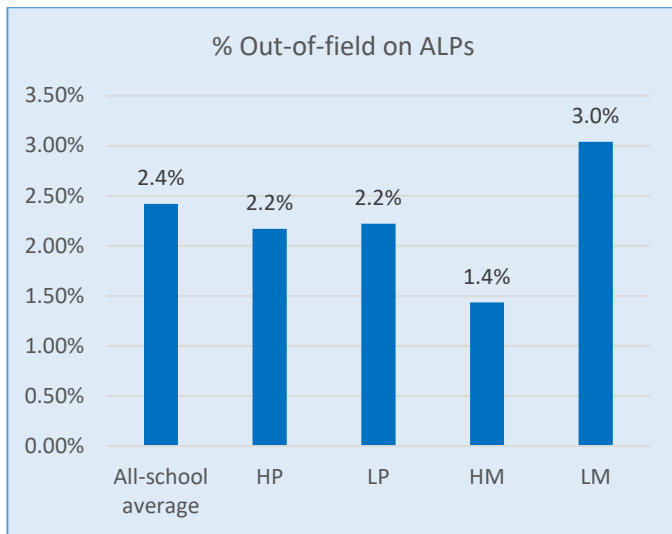
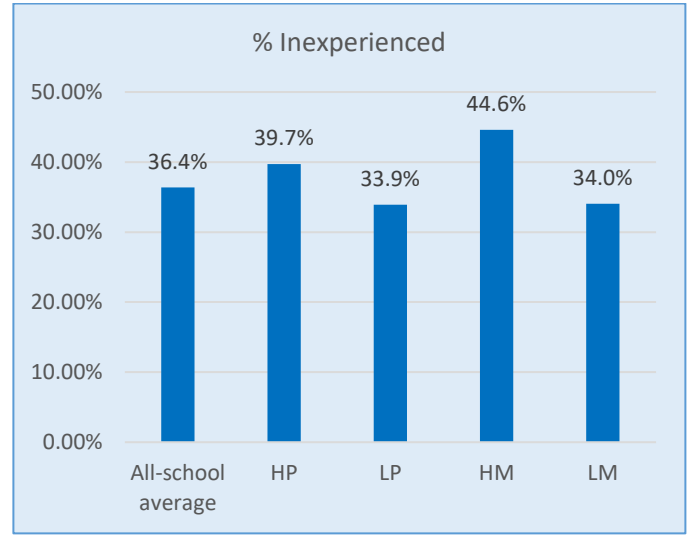
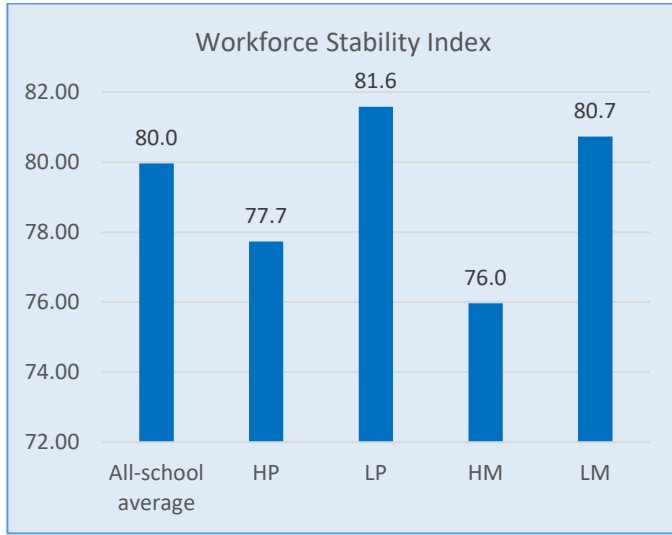
100 - ((% Inexperience) + (% Out-of-Field on ALPs) + (% Ineffective) + (% Attrition) / 4).¹

HP schools by definition are those schools in the top 25% when all schools are ranked by % of students eligible for the national free and reduced-price lunch program. HM schools by definition are those schools in the top 25% when all schools are ranked by % of students reported as non-white. The lowest 25% being used for low poverty (LP) and low minority (LM) respectively.

¹ Summative TESS evaluations were not required per Executive Orders 20-06 and 20-48, so for 20-21, the divisor was 3.

II. Schools, WSI scores - 2020-2021

Average **School** scores for each of the WSI factors in each of the identified populations (2020-2021 school year) are presented in the figures below.²



III. Schools - 3-yr WSI scores

Schools	% Inexperienced			% Out-of-field on ALPs			% Ineffective			% Attrition			Workforce Stability Index		
	18-19	19-20	20-21	18-19	19-20	20-21	18-19	19-20	20-21	18-19	19-20	20-21	18-19	19-20	20-21
All-school average	17.4%	16.5%	36.4%	2.1%	2.3%	2.4%	0.0%	0.2%	NA	21.2%	18.0%	21.3%	89.8	90.7	80.0
HP	20.2%	20.0%	39.7%	2.2%	2.7%	2.2%	0.0%	0.2%	NA	27.1%	19.5%	24.9%	87.6	89.4	77.7
LP	15.8%	15.5%	33.9%	1.8%	2.1%	2.2%	0.0%	0.0%	NA	17.9%	16.6%	19.2%	91.1	91.5	81.6
HM	25.7%	24.4%	44.6%	1.6%	1.8%	1.4%	0.0%	0.3%	NA	26.2%	21.2%	26.1%	86.6	88.1	76.0
LM	12.2%	11.8%	34.0%	2.3%	2.5%	3.0%	0.0%	0.2%	NA	22.5%	17.4%	20.7%	90.8	92.0	80.7

² Summative TESS evaluations were not required during the 20-21 school year per Executive Orders 20-06 and 20-48, so there is no chart for the ineffectiveness factor.

IV. Schools, High-Poverty, 2020-2021

The following tables represent the data found in all HP schools.

Table 1. High-Poverty Schools

WSI (RED) < All-School average of 80.0

School LEA	School Name	% F/RL	% Inexp.	% ALPs	% Attrition	% Ineff.	WSI
6601014	ALBERT PIKE ELEMENTARY SCHOOL	90.1%	18.2%	0.0%	9.1%	N/A	90.9
6002050	AMBOY ELEMENTARY SCHOOL	93.3%	64.0%	4.0%	16.0%	N/A	72.0
3904010	ANNA STRONG LEARNING ACADEMY	93.8%	39.1%	0.0%	39.1%	N/A	73.9
1608023	ANNIE CAMP JR. HIGH SCHOOL	80.3%	36.4%	0.0%	19.2%	N/A	81.5
6094001	ARKANSAS CONSOLIDATED HIGH SCHOOL-ALEXANDER	100.0%	100.0%	0.0%	44.4%	N/A	51.9
6094002	ARKANSAS CONSOLIDATED HIGH SCHOOL-DERMOTT	100.0%	100.0%	0.0%	23.1%	N/A	59.0
6094006	ARKANSAS CONSOLIDATED HIGH SCHOOL-HARRISBURG	100.0%	100.0%	0.0%	23.1%	N/A	59.0
6094005	ARKANSAS CONSOLIDATED HIGH SCHOOL-MANSFIELD	100.0%	100.0%	0.0%	25.0%	N/A	58.3
7203010	ASBELL ELEMENTARY SCHOOL	87.1%	31.6%	0.0%	15.8%	N/A	84.2
7401001	AUGUSTA ELEMENTARY SCHOOL	88.7%	40.0%	0.0%	20.0%	N/A	80.0
7401003	AUGUSTA HIGH SCHOOL	83.8%	36.8%	5.3%	47.4%	N/A	70.2
2808024	BALDWIN ELEMENTARY SCHOOL	88.0%	27.8%	5.6%	11.1%	N/A	85.2
6001017	BALE ELEMENTARY SCHOOL	90.2%	50.0%	0.0%	27.3%	N/A	74.2
5401002	BARTON ELEMENTARY SCHOOL	86.3%	25.8%	0.0%	29.0%	N/A	81.7
5401003	BARTON HIGH SCHOOL	85.0%	60.4%	1.9%	18.9%	N/A	73.0
6001052	BASELINE ELEMENTARY SCHOOL	84.3%	58.8%	0.0%	47.1%	N/A	64.7
7207059	BAYYARI ELEMENTARY SCHOOL	89.7%	12.9%	0.0%	22.6%	N/A	88.2
6601005	BELLE POINT ALTERNATIVE CENTER	92.1%	17.6%	0.0%	8.8%	N/A	91.2
2903008	BERYL HENRY UPPER ELEM. SCHOOL	88.8%	6.7%	0.0%	6.7%	N/A	95.6
2901001	BLEVINS ELEMENTARY SCHOOL	85.9%	33.3%	4.8%	19.0%	N/A	81.0
2901002	BLEVINS HIGH SCHOOL	79.3%	60.7%	0.0%	114.3%	N/A	41.7
4702006	BLYTHEVILLE ELEMENTARY SCHOOL	80.5%	35.7%	7.1%	21.4%	N/A	78.6
4702012	BLYTHEVILLE MIDDLE SCHOOL	83.5%	29.4%	2.9%	38.2%	N/A	76.5
4702008	BLYTHEVILLE PRIMARY SCHOOL	81.1%	41.2%	0.0%	20.6%	N/A	79.4
6001006	BOOKER ARTS MAGNET ELEMENTARY SCHOOL	88.0%	12.5%	0.0%	25.0%	N/A	87.5
6002054	BOONE PARK ELEMENTARY SCHOOL	97.7%	38.1%	4.8%	23.8%	N/A	77.8
7303015	BRADFORD HIGH SCHOOL	80.0%	48.1%	3.7%	55.6%	N/A	64.2
6001018	BRADY ELEMENTARY SCHOOL	91.9%	36.4%	0.0%	31.8%	N/A	77.3
3505026	BROADMOOR ELEMENTARY SCHOOL	93.8%	20.0%	0.0%	30.0%	N/A	83.3
6505017	BRUNO-PYATT K-12 SCHOOL	79.7%	55.9%	14.7%	32.4%	N/A	65.7
4801001	C.B. PARTEE ELEMENTARY SCHOOL	80.8%	33.3%	4.8%	9.5%	N/A	84.1
4901001	CADDO HILLS ELEMENTARY SCHOOL	80.2%	16.0%	8.0%	8.0%	N/A	89.3
3301001	CALICO ROCK ELEMENTARY SCHOOL	85.2%	33.3%	0.0%	27.8%	N/A	79.6
5204026	CAMDEN FAIRVIEW INTERMEDIATE	84.6%	22.7%	0.0%	27.3%	N/A	83.3
6601007	CARNALL ELEMENTARY SCHOOL	86.2%	10.4%	4.2%	4.2%	N/A	93.8
4713053	CARROLL SMITH ELEMENTARY SCHOO	92.5%	37.0%	0.0%	11.1%	N/A	84.0
6001021	CARVER MAGNET ELEM. SCHOOL	82.4%	36.4%	0.0%	36.4%	N/A	75.8
6802001	CAVE CITY ELEMENTARY SCHOOL	78.1%	14.3%	2.9%	11.4%	N/A	90.5
6802007	CAVE CITY MIDDLE SCHOOL	78.0%	25.8%	6.5%	9.7%	N/A	86.0
2104017	CENTRAL ELEMENTARY SCHOOL	88.2%	81.5%	0.0%	11.1%	N/A	69.1
6201003	CENTRAL ELEMENTARY SCHOOL	88.0%	30.8%	0.0%	34.6%	N/A	78.2
5403019	CENTRAL HIGH SCHOOL	95.6%	37.8%	0.0%	24.4%	N/A	79.3
6001079	CHICOT ELEMENTARY SCHOOL	97.4%	24.4%	0.0%	20.0%	N/A	85.2
4802008	CLARENDON ELEMENTARY SCHOOL	94.1%	30.4%	4.3%	21.7%	N/A	81.2
4802010	CLARENDON HIGH SCHOOL	90.1%	57.9%	2.6%	31.6%	N/A	69.3
6001077	CLOVERDALE MIDDLE SCHOOL	90.4%	41.5%	9.4%	17.0%	N/A	77.4
3509066	COLEMAN ELEMENTARY SCHOOL	82.4%	23.3%	0.0%	13.3%	N/A	87.8
4605024	COLLEGE HILL MIDDLE SCHOOL	80.6%	58.8%	0.0%	11.8%	N/A	76.5
5805017	CRAWFORD ELEMENTARY SCHOOL	87.5%	17.4%	0.0%	13.0%	N/A	89.9
2903015	CREATIVE ACTION TEAM SCHOOL	89.3%	93.1%	0.0%	13.8%	N/A	64.4
6094009	CSTP CIVILIAN STUDENT TRAINING PROGRAM	100.0%	100.0%	0.0%	0.0%	N/A	66.7
2601001	CUTTER-MORNING STAR ELEM. SCH.	80.5%	46.2%	0.0%	42.3%	N/A	70.5
7503007	DANVILLE MIDDLE SCHOOL	85.3%	37.0%	3.7%	29.6%	N/A	76.5
6001055	DAVID O.DODD ELEMENTARY SCHOOL	87.2%	16.7%	0.0%	16.7%	N/A	88.9

0402011	DECATUR MIDDLE SCHOOL	80.5%	44.4%	11.1%	44.4%	N/A	66.7
0402008	DECATUR NORTHSIDE ELEMENTARY	82.7%	27.8%	5.6%	27.8%	N/A	79.6
6701002	DEQUEEN PRIMARY	79.3%	10.5%	0.0%	10.5%	N/A	93.0
0901001	DERMOTT ELEMENTARY SCHOOL	94.8%	47.6%	0.0%	4.8%	N/A	82.5
0901003	DERMOTT HIGH SCHOOL	93.6%	86.3%	0.0%	8.8%	N/A	68.3
3502010	DOLLARWAY HIGH SCHOOL	89.6%	50.0%	11.9%	19.0%	N/A	73.0
6601022	DORA KIMMONS JR. HIGH SCHOOL	92.2%	20.0%	0.0%	9.4%	N/A	90.2
2202004	DREW CENTRAL ELEM. SCHOOL	79.3%	18.5%	0.0%	0.0%	N/A	93.8
6001007	DUNBAR MAGNET MIDDLE SCHOOL	91.4%	36.0%	0.0%	24.0%	N/A	80.0
1802005	EARLE ELEMENTARY SCHOOL	96.2%	50.0%	11.1%	55.6%	N/A	61.1
1802007	EARLE HIGH SCHOOL	93.8%	69.2%	7.7%	69.2%	N/A	51.3
1803033	EAST JUNIOR HIGH SCHOOL	86.4%	19.4%	2.8%	16.7%	N/A	87.0
3509063	EDGEWOOD ELEMENTARY SCHOOL	88.4%	23.8%	0.0%	14.3%	N/A	87.3
7207040	ELMDALE ELEMENTARY SCHOOL	88.7%	34.5%	0.0%	20.7%	N/A	81.6
0903007	EUDORA ELEMENTARY SCHOOL	92.0%	14.3%	0.0%	14.3%	N/A	90.5
6055702	EXALT ACADEMY OF SOUTHWEST LITTLE ROCK	95.8%	79.2%	0.0%	27.1%	N/A	64.6
4605020	FAIRVIEW ELEMENTARY SCHOOL	81.1%	40.9%	0.0%	59.1%	N/A	66.7
5204021	FAIRVIEW ELEMENTARY SCHOOL	83.2%	20.8%	4.2%	12.5%	N/A	87.5
1803026	FAULK ELEMENTARY SCHOOL	88.1%	20.6%	0.0%	11.8%	N/A	89.2
6201010	FORREST CITY JR. HIGH	80.0%	35.3%	0.0%	70.6%	N/A	64.7
1611039	FOX MEADOW ELEMENTARY	80.3%	21.6%	0.0%	8.1%	N/A	90.1
1611045	FOX MEADOW SCHOOL OF CREATIVE MEDIA	83.7%	37.8%	5.4%	18.9%	N/A	79.3
3544701	FRIENDSHIP ASPIRE ACADEMY	85.1%	80.0%	0.0%	13.3%	N/A	68.9
3545703	FRIENDSHIP ASPIRE ACADEMY SOUTHEAST PINE BLUFF HIGH	93.2%	100.0%	0.0%	0.0%	N/A	66.7
6061701	FRIENDSHIP ASPIRE ELEMENTARY ACADEMY LITTLE ROCK	99.2%	100.0%	0.0%	100.0%	N/A	33.3
6061702	FRIENDSHIP ASPIRE MIDDLE ACADEMY LITTLE ROCK	98.8%	100.0%	0.0%	62.5%	N/A	45.8
7207053	GEORGE ELEMENTARY SCHOOL	88.0%	19.4%	0.0%	12.9%	N/A	89.2
7207060	GEORGE JUNIOR HIGH SCHOOL	91.1%	14.3%	3.6%	17.9%	N/A	88.1
6002056	GLENVIEW ELEMENTARY SCHOOL	98.5%	33.3%	0.0%	20.8%	N/A	81.9
0405040	GRACE HILL ELEMENTARY SCHOOL	80.9%	15.1%	3.8%	9.4%	N/A	90.6
6052703	GRADUATE ARKANSAS CHARTER HIGH	81.3%	80.0%	0.0%	140.0%	N/A	26.7
0803011	GREEN FOREST ELEMENTARY SCHOOL	86.8%	24.1%	3.4%	20.7%	N/A	83.9
0803012	GREEN FOREST HIGH SCHOOL	84.9%	54.0%	1.6%	46.0%	N/A	66.1
0803013	GREEN FOREST INTERMED SCHOOL	82.8%	32.7%	8.2%	20.4%	N/A	79.6
7204027	GREENLAND ELEMENTARY SCHOOL	78.9%	27.3%	0.0%	0.0%	N/A	90.9
5602005	HARRISBURG ELEMENTARY SCHOOL	80.1%	12.0%	4.0%	16.0%	N/A	89.3
6601030	HARRY C. MORRISON ELEMENTARY SCHOOL	93.5%	12.2%	0.0%	8.2%	N/A	93.2
5903011	HAZEN ELEMENTARY SCHOOL	78.1%	36.1%	0.0%	8.3%	N/A	85.2
1608020	HEALTH/WELLNESS ENVI MAGNET	89.7%	26.3%	0.0%	8.8%	N/A	88.3
7207055	HELEN TYSON MIDDLE SCHOOL	81.5%	22.2%	0.0%	20.6%	N/A	85.7
6001013	HENDERSON MIDDLE SCHOOL	88.3%	20.8%	1.9%	18.9%	N/A	86.2
0601006	HERMITAGE ELEMENTARY SCHOOL	82.4%	38.9%	11.1%	22.2%	N/A	75.9
3809014	HILLCREST ELEMENTARY SCHOOL	86.1%	27.8%	5.6%	16.7%	N/A	83.3
0445701	HOPE ACADEMY OF NWA ELEMENTARY	100.0%	80.0%	0.0%	0.0%	N/A	73.3
2903013	HOPE ACADEMY OF PUBLIC SERVICE	84.3%	22.7%	4.5%	45.5%	N/A	75.8
6703012	HORATIO ELEMENTARY SCHOOL	79.9%	13.9%	0.0%	11.1%	N/A	91.7
2603702	HOT SPRINGS JUNIOR ACADEMY	83.4%	27.2%	0.0%	8.6%	N/A	88.1
6601011	HOWARD ELEMENTARY SCHOOL	95.4%	9.8%	0.0%	9.8%	N/A	93.5
3804009	HOXIE ELEMENTARY SCHOOL	81.5%	31.0%	2.4%	16.7%	N/A	83.3
5204025	IVORY PRIMARY SCHOOL	83.1%	35.0%	0.0%	35.0%	N/A	76.7
6060701	IVY HILL ACADEMY OF SCHOLARSHIP	93.0%	100.0%	0.0%	73.3%	N/A	42.2
3306014	IZARD CO. CONS. ELEM. SCHOOL	83.7%	43.8%	0.0%	25.0%	N/A	77.1
3306016	IZARD COUNTY CONS MIDDLE SCH	80.2%	26.1%	8.7%	34.8%	N/A	76.8
7207054	J. O. KELLY MIDDLE SCHOOL	91.9%	16.9%	5.1%	22.0%	N/A	85.3
5403023	J.F. WAHL ELEMENTARY SCHOOL	97.3%	17.9%	0.0%	15.4%	N/A	88.9
3505044	JACK ROBEY MIDDLE SCHOOL	81.3%	51.7%	5.2%	20.7%	N/A	74.1
1803038	JACKSON/WONDER ELEMENTARY SCHOOL	84.1%	16.1%	0.0%	25.8%	N/A	86.0
6004008	JACKSONVILLE MIDDLE SCHOOL	80.8%	69.3%	2.7%	21.3%	N/A	68.9
5102005	JASPER ELEMENTARY SCHOOL	79.1%	38.9%	0.0%	11.1%	N/A	83.3
3102001	JOANN WALTERS ELEMENTARY SCH	81.3%	22.7%	0.0%	13.6%	N/A	87.9
7207041	JONES ELEMENTARY SCHOOL	95.4%	17.2%	0.0%	17.2%	N/A	88.5

7307030	KENSETT ELEMENTARY SCHOOL	78.7%	12.5%	0.0%	12.5%	N/A	91.7
1608026	KINDERGARTEN CENTER	80.9%	41.7%	0.0%	25.0%	N/A	77.8
5440706	KIPP BLYTHEVILLE COLLEGIATE HIGH SCHOOL	85.9%	86.2%	0.0%	65.5%	N/A	49.4
5440701	KIPP DELTA ELEM LITERACY ACAD	91.7%	76.0%	0.0%	44.0%	N/A	60.0
5440705	KIPP: BLYTHEVILLE COLLEGE PREP	87.8%	76.9%	0.0%	30.8%	N/A	64.1
5440702	KIPP:DELTA COLLEGE PREP SCHOOL	92.2%	100.0%	0.0%	31.3%	N/A	56.3
5440703	KIPP:DELTA COLLEGIATE HIGH SCHOOL	88.2%	83.3%	0.0%	38.9%	N/A	59.3
5503010	KIRBY ELEMENTARY SCHOOL	80.0%	25.0%	6.3%	25.0%	N/A	81.3
3509064	L. L. OWEN ELEMENTARY SCHOOL	87.1%	8.7%	0.0%	4.3%	N/A	95.7
3704007	LAFAYETTE COUNTY ELEMENTARY	86.6%	28.6%	4.8%	33.3%	N/A	77.8
3704013	LAFAYETTE COUNTY HIGH SCHOOL	81.2%	70.9%	0.0%	27.3%	N/A	67.3
0903016	LAKESIDE ELEMENTARY SCHOOL	84.3%	21.4%	3.6%	35.7%	N/A	79.8
0903018	LAKESIDE HIGH SCHOOL	77.7%	56.1%	0.0%	10.5%	N/A	77.8
7207070	LAKESIDE JUNIOR HIGH SCHOOL	85.8%	25.4%	0.0%	25.4%	N/A	83.1
0903017	LAKESIDE MIDDLE SCHOOL	85.5%	20.0%	0.0%	16.0%	N/A	88.0
2603023	LANGSTON ELEM LEADERSHIP ACADEMY MAGNET SCHOOL	96.3%	43.3%	0.0%	30.0%	N/A	75.6
0506031	LEAD HILL ELEMENTARY SCHOOL	82.8%	58.3%	0.0%	58.3%	N/A	61.1
3904011	LEE HIGH SCHOOL	87.1%	45.5%	9.1%	122.7%	N/A	40.9
5608034	LEPANTO ELEMENTARY SCHOOL	82.9%	33.3%	0.0%	8.3%	N/A	86.1
6502001	LESLIE INTERMEDIATE SCHOOL	79.4%	16.7%	11.1%	22.2%	N/A	83.3
6201016	LINCOLN ACADEMY	87.7%	45.5%	0.0%	54.5%	N/A	66.7
7205031	LINCOLN ELEMENTARY SCHOOL	77.7%	19.0%	4.8%	14.3%	N/A	87.3
7207071	LINDA CHILDERS KNAPP ELEMENTARY SCHOOL	89.5%	15.4%	0.0%	17.9%	N/A	88.9
6001083	LITTLE ROCK HALL STEAM MAGNET HIGH SCHOOL	85.8%	42.5%	6.8%	0.0%	N/A	83.6
6001082	LITTLE ROCK SOUTHWEST HIGH SCHOOL	85.6%	37.4%	4.7%	0.0%	N/A	86.0
6001035	M.L. KING ELEMENTARY SCHOOL	89.1%	26.1%	0.0%	17.4%	N/A	85.5
6001057	MABELVALE ELEMENTARY SCHOOL	93.7%	40.0%	0.0%	28.0%	N/A	77.3
6001062	MABELVALE MIDDLE SCHOOL	92.6%	30.2%	0.0%	20.8%	N/A	83.0
1803028	MADDUX ELEMENTARY SCHOOL	80.6%	16.7%	0.0%	23.3%	N/A	86.7
4202007	MAGAZINE ELEMENTARY SCHOOL	79.0%	50.0%	0.0%	3.1%	N/A	82.3
4202008	MAGAZINE HIGH SCHOOL	78.7%	71.9%	3.1%	18.8%	N/A	68.8
2603015	MAIN STREET VISUAL & PERFORMING ARTS MAGNET SCHOOL	92.2%	41.5%	0.0%	18.9%	N/A	79.9
6001003	MANN MAGNET MIDDLE SCHOOL	78.7%	43.9%	9.1%	21.2%	N/A	75.3
6606060	MANSFIELD ELEMENTARY SCHOOL	81.4%	30.4%	0.0%	34.8%	N/A	78.3
6606061	MANSFIELD MIDDLE SCHOOL	77.8%	17.9%	3.6%	17.9%	N/A	86.9
1804024	MARION VISUAL & PERFORMING ARTS MAGNET SCHOOL	86.8%	27.7%	0.0%	29.8%	N/A	80.9
5604015	MARKED TREE ELEMENTARY SCHOOL	86.1%	50.0%	0.0%	22.2%	N/A	75.9
5604017	MARKED TREE HIGH SCHOOL	84.6%	48.0%	0.0%	52.0%	N/A	66.7
5404030	MARVELL-ELAINE ELEMENTARY SCH	98.0%	0.0%	9.1%	54.5%	N/A	78.8
5404032	MARVELL-ELAINE HIGH SCHOOL	96.7%	25.0%	0.0%	25.0%	N/A	83.3
1704016	MARVIN PRIMARY SCHOOL	83.3%	43.5%	4.3%	21.7%	N/A	76.8
1608017	MATH & SCIENCE MAGNET SCHOOL	94.3%	21.2%	0.0%	15.4%	N/A	87.8
3502006	MATTHEWS ELEMENTARY SCHOOL	96.6%	44.0%	0.0%	36.0%	N/A	73.3
6001020	MCDERMOTT ELEMENTARY SCHOOL	90.0%	47.4%	0.0%	26.3%	N/A	75.4
2105026	MCGEHEE ELEMENTARY SCHOOL	80.5%	16.7%	6.3%	10.4%	N/A	88.9
6002061	MEADOW PARK ELEMENTARY SCHOOL	95.8%	65.4%	0.0%	15.4%	N/A	73.1
6001033	MEADOWCLIFF ELEMENTARY SCHOOL	95.9%	58.8%	5.9%	41.2%	N/A	64.7
1608022	MICROSOCIETY MAGNET SCHOOL	94.3%	30.6%	0.0%	22.4%	N/A	82.3
3211022	MIDLAND ELEMENTARY SCHOOL	78.8%	36.4%	0.0%	9.1%	N/A	84.8
3104005	MINERAL SPRINGS ELEM. SCHOOL	92.1%	5.3%	0.0%	26.3%	N/A	89.5
3104006	MINERAL SPRINGS HIGH SCHOOL	87.1%	45.0%	0.0%	17.5%	N/A	79.2
7207065	MONITOR ELEMENTARY	82.7%	13.5%	5.4%	16.2%	N/A	88.3
1507029	MORRILTON ELEMENTARY SCHOOL	78.9%	24.0%	0.0%	4.0%	N/A	90.7
1507032	MORRILTON PRIMARY SCHOOL	80.1%	19.0%	0.0%	4.8%	N/A	92.1
2607046	MOUNTAIN PINE ELEM. SCHOOL	85.6%	26.1%	4.3%	13.0%	N/A	85.5
2607047	MOUNTAIN PINE HIGH SCHOOL	79.9%	68.0%	4.0%	28.0%	N/A	66.7
1703012	MOUNTAINBURG ELEMENTARY SCHOOL	78.1%	8.7%	0.0%	8.7%	N/A	94.2
5106004	MT. JUDEA K-12 SCHOOL	78.8%	66.7%	3.3%	53.3%	N/A	58.9
6004005	MURRELL TAYLOR ELEMENTARY SCHOOL	88.2%	75.7%	0.0%	27.0%	N/A	65.8
3403014	NEWPORT ELEMENTARY SCHOOL	81.4%	28.6%	2.0%	18.4%	N/A	83.7
6060702	NICHOLS INTERMEDIATE ACADEMY OF LEADERSHIP	93.1%	100.0%	0.0%	100.0%	N/A	33.3

0304021	NORFORK ELEMENTARY SCHOOL	81.4%	8.7%	8.7%	8.7%	N/A	91.3
4713052	NORTH ELEMENTARY SCHOOL	91.5%	81.8%	0.0%	27.3%	N/A	63.6
6002071	NORTH LITTLE ROCK MIDDLE SCHOOL 6TH GRADE CAMPUS	78.3%	37.5%	0.0%	28.6%	N/A	78.0
5805020	OAKLAND HEIGHTS ELEM. SCHOOL	85.1%	9.1%	0.0%	12.1%	N/A	92.9
2603011	OAKLAWN STEM MAGNET SCHOOL	88.9%	40.0%	0.0%	57.1%	N/A	67.6
5102023	OARK ELEMENTARY SCHOOL	88.1%	61.5%	7.7%	23.1%	N/A	69.2
5102024	OARK HIGH SCHOOL	89.0%	85.3%	5.9%	41.2%	N/A	55.9
5706009	ODEN SCHOOLS	79.2%	42.9%	2.9%	31.4%	N/A	74.3
0405051	OLD WIRE ELEMENTARY SCHOOL	82.9%	4.3%	6.5%	15.2%	N/A	91.3
0504022	OMAHA ELEMENTARY SCHOOL	77.7%	40.9%	0.0%	18.2%	N/A	80.3
4713051	OSCEOLA HIGH SCHOOL	87.1%	45.7%	0.0%	31.4%	N/A	74.3
4713705	OSCEOLA STEM CHARTER	89.5%	80.0%	0.0%	40.0%	N/A	60.0
6001058	OTTER CREEK ELEMENTARY SCHOOL	83.9%	19.0%	0.0%	23.8%	N/A	85.7
6205027	PALESTINE-WHEATLEY ELEM. SCH.	85.2%	7.4%	14.8%	11.1%	N/A	88.9
6205028	PALESTINE-WHEATLEY SENIOR HIGH	85.6%	32.0%	0.0%	36.0%	N/A	77.3
7309038	PANGBURN ELEMENTARY SCHOOL	78.1%	25.0%	0.0%	32.1%	N/A	81.0
7207050	PARSON HILLS ELEM. SCHOOL	96.7%	16.7%	0.0%	10.0%	N/A	91.1
3505042	PINE BLUFF HIGH SCHOOL	78.5%	44.8%	0.0%	29.9%	N/A	75.1
3541703	PINE BLUFF LIGHTHOUSE COLLEGE PREP ACADEMY HIGH SCHOOL	92.9%	100.0%	0.0%	33.3%	N/A	55.6
3541701	PINE BLUFF LIGHTHOUSE ELEMENTARY	90.8%	91.7%	0.0%	41.7%	N/A	55.6
6004007	PINEWOOD ELEMENTARY SCHOOL	84.1%	70.6%	0.0%	14.7%	N/A	71.6
0203027	PORTLAND ELEMENTARY SCHOOL	78.3%	9.1%	0.0%	9.1%	N/A	93.9
6053703	PREMIER HIGH SCHOOL OF LITTLE ROCK	100.0%	100.0%	0.0%	60.0%	N/A	46.7
6062703	PREMIER HIGH SCHOOL OF NORTH LITTLE ROCK	100.0%	100.0%	0.0%	0.0%	N/A	66.7
5006022	PRESCOTT ELEMENTARY SCHOOL	79.9%	32.0%	0.0%	12.0%	N/A	85.3
5006025	PRESCOTT JUNIOR HIGH SCHOOL	79.6%	33.3%	0.0%	36.4%	N/A	76.8
2301009	PRESTON & FLORENCE MATTISON ELEM. SCHOOL	77.7%	11.5%	0.0%	7.7%	N/A	93.6
6060703	PRODIGY PREPARATORY ACADEMY OF SERVICE	94.1%	100.0%	0.0%	0.0%	N/A	66.7
1106022	RECTOR ELEMENTARY SCHOOL	80.9%	21.7%	8.7%	4.3%	N/A	88.4
2104024	REED ELEMENTARY SCHOOL	83.7%	73.3%	3.3%	13.3%	N/A	70.0
6002084	RIDGE ROAD ELEMENTARY SCHOOL	92.5%	62.1%	0.0%	31.0%	N/A	69.0
4706069	RIVERCREST ELEMENTARY SCHOOL	80.7%	23.9%	4.3%	23.9%	N/A	82.6
7207042	ROBERT E. LEE ELEM. SCHOOL	90.8%	16.7%	0.0%	33.3%	N/A	83.3
3502009	ROBERT F MOREHEAD MIDDLE SCHOO	92.3%	66.7%	11.1%	55.6%	N/A	55.6
6001040	ROMINE ELEMENTARY SCHOOL	94.3%	58.8%	0.0%	29.4%	N/A	70.6
7503005	S.C. TUCKER ELEMENTARY SCHOOL	83.6%	13.0%	4.3%	17.4%	N/A	88.4
6002069	SEVENTH STREET ELEM. SCHOOL	96.1%	65.2%	0.0%	43.5%	N/A	63.8
7104014	SHIRLEY ELEMENTARY SCHOOL	86.1%	31.3%	31.3%	25.0%	N/A	70.8
7104015	SHIRLEY HIGH SCHOOL	80.0%	71.4%	35.7%	78.6%	N/A	38.1
7207069	SONORA MIDDLE SCHOOL	88.6%	22.8%	1.8%	17.5%	N/A	86.0
7105019	SOUTH SIDE HIGH SCHOOL	80.4%	57.1%	0.0%	10.2%	N/A	77.6
7207048	SOUTHWEST JUNIOR HIGH SCHOOL	77.8%	25.9%	5.6%	27.8%	N/A	80.2
3505051	SOUTHWOOD ELEMENTARY SCHOOL	91.9%	21.2%	0.0%	33.3%	N/A	81.8
6601016	SPRADLING ELEMENTARY SCHOOL	94.7%	18.0%	0.0%	12.0%	N/A	90.0
7207049	SPRINGDALE HIGH SCHOOL	82.7%	17.0%	1.7%	17.6%	N/A	87.9
6001041	STEPHENS ELEMENTARY	91.5%	22.2%	3.7%	18.5%	N/A	85.2
6201014	STEWART ELEMENTARY SCHOOL	87.0%	41.7%	0.0%	37.5%	N/A	73.6
7009050	STRONG-HUTTIG SCHOOLS	93.2%	35.0%	2.5%	10.0%	N/A	84.2
6601017	SUNNYMEDE ELEMENTARY SCHOOL	94.1%	19.6%	0.0%	21.4%	N/A	86.3
6601018	SUTTON ELEMENTARY SCHOOL	91.7%	8.1%	0.0%	6.5%	N/A	95.2
6001047	TERRY ELEMENTARY SCHOOL	83.7%	29.2%	4.2%	16.7%	N/A	83.3
3505036	THIRTY-FOURTH STREET ELEMENTARY SCHOOL	90.6%	10.3%	3.4%	6.9%	N/A	93.1
6601032	TILLES ELEMENTARY SCHOOL	91.7%	14.9%	0.0%	17.0%	N/A	89.4
6901015	TIMBO ELEMENTARY SCHOOL	83.3%	20.0%	0.0%	6.7%	N/A	91.1
6901016	TIMBO HIGH SCHOOL	87.2%	75.6%	2.4%	17.1%	N/A	68.3
5605021	TRUMANN ELEMENTARY SCHOOL	78.9%	14.3%	2.9%	20.0%	N/A	87.6
6601019	TRUSTY ELEMENTARY SCHOOL	97.3%	18.4%	0.0%	4.1%	N/A	92.5
7207064	TURNBOW ELEMENTARY SCHOOL	81.7%	21.2%	0.0%	30.3%	N/A	82.8
7510024	TWO RIVERS ELEMENTARY SCHOOL	86.7%	30.4%	0.0%	21.7%	N/A	82.6
7510019	TWO RIVERS HIGH SCHOOL	78.3%	55.0%	8.3%	26.7%	N/A	70.0
5608035	TYRONZA ELEMENTARY SCHOOL	81.4%	37.5%	12.5%	18.8%	N/A	77.1

4605022	UNION ELEMENTARY SCHOOL	89.2%	40.0%	0.0%	46.7%	N/A	71.1
1611043	UNIVERSITY HEIGHTS SCHOOL OF MEDICAL ARTS	79.7%	51.5%	6.1%	15.2%	N/A	75.8
4605021	VERA KILPATRICK ELEM. SCHOOL	84.3%	40.5%	0.0%	24.3%	N/A	78.4
2503009	VIOLA ELEMENTARY SCHOOL	83.9%	0.0%	5.3%	5.3%	N/A	96.5
6001059	WAKEFIELD ELEMENTARY SCHOOL	98.3%	42.3%	0.0%	11.5%	N/A	82.1
6401001	WALDRON ELEMENTARY SCHOOL	83.6%	16.1%	0.0%	16.1%	N/A	89.2
6401004	WALDRON MIDDLE SCHOOL	79.7%	22.9%	0.0%	22.9%	N/A	84.8
6004004	WARREN DUPREE ELEMENTARY SCHOOL	85.3%	75.0%	8.3%	25.0%	N/A	63.9
6001042	WASHINGTON ELEMENTARY SCHOOL	93.6%	45.8%	0.0%	37.5%	N/A	72.2
3509068	WATSON CHAPEL JR. HIGH SCHOOL	79.4%	43.1%	2.0%	21.6%	N/A	77.8
6001078	WATSON ELEMENTARY SCHOOL	92.6%	50.0%	0.0%	50.0%	N/A	66.7
1803030	WEAVER ELEMENTARY SCHOOL	83.5%	35.0%	0.0%	10.0%	N/A	85.0
6001029	WESTERN HILLS ELEM. SCHOOL	91.4%	50.0%	0.0%	50.0%	N/A	66.7
7509030	WESTERN YELL CO. ELEM. SCHOOL	91.9%	23.5%	0.0%	17.6%	N/A	86.3
7509033	WESTERN YELL CO. HIGH SCHOOL	90.0%	82.6%	0.0%	17.4%	N/A	66.7
3606025	WESTSIDE ELEMENTARY SCHOOL	81.3%	22.7%	4.5%	31.8%	N/A	80.3
7207046	WESTWOOD ELEMENTARY SCHOOL	86.0%	12.0%	0.0%	32.0%	N/A	85.3
5707021	WICKES ELEMENTARY SCHOOL	81.4%	39.3%	0.0%	7.1%	N/A	84.5
6601021	WILLIAM O. DARBY JR. HIGH SCH.	91.8%	18.6%	0.0%	14.3%	N/A	89.0
3004025	WILSON INTERMEDIATE SCHOOL	78.6%	33.3%	0.0%	8.3%	N/A	86.1
2903007	WM. JEFFERSON CLINTON PRIMARY SCHOOL	87.8%	38.5%	0.0%	25.0%	N/A	78.8
1803035	WONDER JUNIOR HIGH SCHOOL	89.2%	23.8%	2.4%	21.4%	N/A	84.1
2903011	YERGER JUNIOR HIGH SCHOOL	80.3%	23.8%	0.0%	9.5%	N/A	88.9
7001009	YOCUM ELEMENTARY SCHOOL	84.7%	43.6%	0.0%	28.2%	N/A	76.1

V. Schools, High-Minority - 2020-2021

The following tables represent the data found in all HM schools.

Table 2. High-Minority Schools

WSI (RED) < All-School average of 80.0

School LEA	School Name	% Minority	% Inexp.	% ALPs	% Attrition	% Ineff.	WSI
6601014	ALBERT PIKE ELEMENTARY SCHOOL	71.4%	18.2%	0.0%	9.1%	N/A	90.9
6002050	AMBOY ELEMENTARY SCHOOL	82.6%	64.0%	4.0%	16.0%	N/A	72.0
3904010	ANNA STRONG LEARNING ACADEMY	90.9%	39.1%	0.0%	39.1%	N/A	73.9
1608023	ANNIE CAMP JR. HIGH SCHOOL	61.4%	36.4%	0.0%	19.2%	N/A	81.5
6094005	ARKANSAS CONSOLIDATED HIGH SCHOOL-MANSFIELD	66.7%	100.0%	0.0%	25.0%	N/A	58.3
4605026	ARKANSAS HIGH SCHOOL	65.9%	52.6%	2.1%	19.6%	N/A	75.3
7401001	AUGUSTA ELEMENTARY SCHOOL	61.4%	40.0%	0.0%	20.0%	N/A	80.0
6001017	BALE ELEMENTARY SCHOOL	93.3%	50.0%	0.0%	27.3%	N/A	74.2
7001010	BARTON JR. HIGH SCHOOL	62.5%	36.4%	0.0%	18.2%	N/A	81.8
6001052	BASELINE ELEMENTARY SCHOOL	94.5%	58.8%	0.0%	47.1%	N/A	64.7
6003146	BATES ELEMENTARY SCHOOL	74.5%	80.6%	0.0%	48.4%	N/A	57.0
7207059	BAYYARI ELEMENTARY SCHOOL	91.0%	12.9%	0.0%	22.6%	N/A	88.2
2903008	BERYL HENRY UPPER ELEM. SCHOOL	83.3%	6.7%	0.0%	6.7%	N/A	95.6
4702006	BLYTHEVILLE ELEMENTARY SCHOOL	89.3%	35.7%	7.1%	21.4%	N/A	78.6
4702706	BLYTHEVILLE HIGH SCHOOL-A NEW TECH SCHOOL	86.0%	36.7%	3.3%	21.7%	N/A	79.4
4702012	BLYTHEVILLE MIDDLE SCHOOL	85.6%	29.4%	2.9%	38.2%	N/A	76.5
4702008	BLYTHEVILLE PRIMARY SCHOOL	88.3%	41.2%	0.0%	20.6%	N/A	79.4
6004011	BOBBY G LESTER ELEMENTARY SCHOOL	60.6%	69.8%	2.3%	27.9%	N/A	66.7
0405041	BONNIE GRIMES ELEM. SCHOOL	69.8%	10.7%	5.4%	16.1%	N/A	89.3
6001006	BOOKER ARTS MAGNET ELEMENTARY SCHOOL	91.8%	12.5%	0.0%	25.0%	N/A	87.5
6002054	BOONE PARK ELEMENTARY SCHOOL	93.4%	38.1%	4.8%	23.8%	N/A	77.8
6001018	BRADY ELEMENTARY SCHOOL	90.0%	36.4%	0.0%	31.8%	N/A	77.3
1803025	BRAGG ELEMENTARY SCHOOL	62.6%	42.4%	0.0%	15.2%	N/A	80.8
4801003	BRINKLEY HIGH SCHOOL	72.4%	57.7%	0.0%	23.1%	N/A	73.1
3505026	BROADMOOR ELEMENTARY SCHOOL	99.0%	20.0%	0.0%	30.0%	N/A	83.3
4801001	C.B. PARTEE ELEMENTARY SCHOOL	73.6%	33.3%	4.8%	9.5%	N/A	84.1
5204023	CAMDEN FAIRVIEW HIGH SCHOOL	68.9%	50.7%	1.4%	20.3%	N/A	75.8

5204026	CAMDEN FAIRVIEW INTERMEDIATE	75.8%	22.7%	0.0%	27.3%	N/A	83.3
5204028	CAMDEN FAIRVIEW MIDDLE SCHOOL	71.6%	36.4%	0.0%	25.0%	N/A	79.5
6056701	CAPITAL CITY LIGHTHOUSE LOWER ACADEMY	96.9%	100.0%	0.0%	25.0%	N/A	58.3
4713053	CARROLL SMITH ELEMENTARY SCHOO	88.7%	37.0%	0.0%	11.1%	N/A	84.0
6001021	CARVER MAGNET ELEM. SCHOOL	93.7%	36.4%	0.0%	36.4%	N/A	75.8
2104017	CENTRAL ELEMENTARY SCHOOL	75.0%	81.5%	0.0%	11.1%	N/A	69.1
1402006	CENTRAL ELEMENTARY SCHOOL	62.8%	29.5%	0.0%	43.2%	N/A	75.8
6201003	CENTRAL ELEMENTARY SCHOOL	93.7%	30.8%	0.0%	34.6%	N/A	78.2
5403019	CENTRAL HIGH SCHOOL	97.0%	37.8%	0.0%	24.4%	N/A	79.3
6001001	CENTRAL HIGH SCHOOL	69.3%	31.0%	0.0%	16.0%	N/A	84.3
6001079	CHICOT ELEMENTARY SCHOOL	97.0%	24.4%	0.0%	20.0%	N/A	85.2
4802008	CLARENDON ELEMENTARY SCHOOL	67.0%	30.4%	4.3%	21.7%	N/A	81.2
4802010	CLARENDON HIGH SCHOOL	68.8%	57.9%	2.6%	31.6%	N/A	69.3
6003095	CLINTON ELEMENTARY SCHOOL	75.7%	80.6%	0.0%	22.2%	N/A	65.7
6001077	CLOVERDALE MIDDLE SCHOOL	97.3%	41.5%	9.4%	17.0%	N/A	77.4
3509066	COLEMAN ELEMENTARY SCHOOL	91.9%	23.3%	0.0%	13.3%	N/A	87.8
4605019	COLLEGE HILL ELEMENTARY SCHOOL	73.7%	18.2%	0.0%	27.3%	N/A	84.8
4605024	COLLEGE HILL MIDDLE SCHOOL	70.7%	58.8%	0.0%	11.8%	N/A	76.5
6003135	COLLEGE STATION ELEM. SCHOOL	94.9%	94.4%	5.6%	33.3%	N/A	55.6
2903015	CREATIVE ACTION TEAM SCHOOL	92.9%	93.1%	0.0%	13.8%	N/A	64.4
6003093	CRYSTAL HILL ELEMENTARY	74.2%	90.2%	2.4%	36.6%	N/A	56.9
6001055	DAVID O.DODD ELEMENTARY SCHOOL	94.9%	16.7%	0.0%	16.7%	N/A	88.9
6701001	DEQUEEN ELEMENTARY SCHOOL	71.4%	8.1%	0.0%	2.7%	N/A	96.4
6701003	DEQUEEN HIGH SCHOOL	74.9%	25.8%	0.0%	16.7%	N/A	85.9
6701005	DEQUEEN JUNIOR HIGH SCHOOL	71.3%	14.0%	0.0%	16.0%	N/A	90.0
6701004	DEQUEEN MIDDLE SCHOOL	70.3%	14.0%	0.0%	14.0%	N/A	90.7
6701002	DEQUEEN PRIMARY	70.7%	10.5%	0.0%	10.5%	N/A	93.0
0901001	DERMOTT ELEMENTARY SCHOOL	96.8%	47.6%	0.0%	4.8%	N/A	82.5
0901003	DERMOTT HIGH SCHOOL	96.1%	86.3%	0.0%	8.8%	N/A	68.3
3502010	DOLLARWAY HIGH SCHOOL	97.4%	50.0%	11.9%	19.0%	N/A	73.0
7207703	DON TYSON SCHOOL OF INNOVATION	60.7%	28.1%	1.9%	4.3%	N/A	88.6
6601022	DORA KIMMONS JR. HIGH SCHOOL	87.3%	20.0%	0.0%	9.4%	N/A	90.2
1608024	DOUGLAS MACARTHUR JUNIOR HIGH SCHOOL	70.8%	32.6%	0.0%	20.7%	N/A	82.2
2104021	DUMAS HIGH SCHOOL	80.6%	87.8%	0.0%	49.0%	N/A	54.4
2104020	DUMAS JUNIOR HIGH SCHOOL	84.8%	84.2%	0.0%	18.4%	N/A	65.8
6001007	DUNBAR MAGNET MIDDLE SCHOOL	93.9%	36.0%	0.0%	24.0%	N/A	80.0
1802005	EARLE ELEMENTARY SCHOOL	97.7%	50.0%	11.1%	55.6%	N/A	61.1
1802007	EARLE HIGH SCHOOL	99.0%	69.2%	7.7%	69.2%	N/A	51.3
1803033	EAST JUNIOR HIGH SCHOOL	98.5%	19.4%	2.8%	16.7%	N/A	87.0
1402007	EAST SIDE ELEMENTARY SCHOOL	64.2%	25.6%	0.0%	44.2%	N/A	76.7
0602016	EASTSIDE ELEMENTARY SCHOOL	64.8%	27.3%	3.0%	24.2%	N/A	81.8
3509063	EDGEWOOD ELEMENTARY SCHOOL	82.7%	23.8%	0.0%	14.3%	N/A	87.3
7001012	EL DORADO HIGH SCHOOL	61.3%	40.5%	0.9%	27.6%	N/A	77.0
7207040	ELMDALE ELEMENTARY SCHOOL	82.5%	34.5%	0.0%	20.7%	N/A	81.6
6047704	ESTEM EAST VILLAGE ELEMENTARY PUBLIC CHARTER SCHOOL	79.9%	100.0%	0.0%	29.8%	N/A	56.7
6047705	ESTEM EAST VILLAGE JUNIOR HIGH PUBLIC CHARTER SCHOOL	85.0%	100.0%	3.0%	33.3%	N/A	54.5
6047701	ESTEM ELEMENTARY SCHOOL	80.2%	100.0%	0.0%	43.6%	N/A	52.1
6047703	ESTEM HIGH SCHOOL	74.4%	100.0%	3.1%	35.9%	N/A	53.6
6047702	ESTEM JUNIOR HIGH PUBLIC CHARTER SCHOOL	75.7%	100.0%	2.9%	37.1%	N/A	53.3
0903007	EUDORA ELEMENTARY SCHOOL	99.0%	14.3%	0.0%	14.3%	N/A	90.5
6055702	EXALT ACADEMY OF SOUTHWEST LITTLE ROCK	98.3%	79.2%	0.0%	27.1%	N/A	64.6
4605020	FAIRVIEW ELEMENTARY SCHOOL	62.3%	40.9%	0.0%	59.1%	N/A	66.7
5204021	FAIRVIEW ELEMENTARY SCHOOL	67.0%	20.8%	4.2%	12.5%	N/A	87.5
1803026	FAULK ELEMENTARY SCHOOL	97.6%	20.6%	0.0%	11.8%	N/A	89.2
6050705	FLIGHTLINE UPPER ACADEMY	59.8%	100.0%	0.0%	60.0%	N/A	46.7
2002007	FORDYCE HIGH SCHOOL	64.9%	67.1%	2.6%	31.6%	N/A	66.2
6001075	FOREST HEIGHTS STEM ACADEMY	73.6%	35.7%	1.8%	16.1%	N/A	82.1
6201011	FORREST CITY HIGH SCHOOL	94.4%	54.9%	0.0%	25.5%	N/A	73.2
6201010	FORREST CITY JR. HIGH	94.7%	35.3%	0.0%	70.6%	N/A	64.7
1611039	FOX MEADOW ELEMENTARY	65.9%	21.6%	0.0%	8.1%	N/A	90.1
1611045	FOX MEADOW SCHOOL OF CREATIVE MEDIA	81.1%	37.8%	5.4%	18.9%	N/A	79.3

3544701	FRIENDSHIP ASPIRE ACADEMY	97.5%	80.0%	0.0%	13.3%	N/A	68.9
3545703	FRIENDSHIP ASPIRE ACADEMY SOUTHEAST PINE BLUFF HIGH	97.3%	100.0%	0.0%	0.0%	N/A	66.7
6061701	FRIENDSHIP ASPIRE ELEMENTARY ACADEMY LITTLE ROCK	100.0%	100.0%	0.0%	100.0%	N/A	33.3
6061702	FRIENDSHIP ASPIRE MIDDLE ACADEMY LITTLE ROCK	97.6%	100.0%	0.0%	62.5%	N/A	45.8
7207053	GEORGE ELEMENTARY SCHOOL	85.2%	19.4%	0.0%	12.9%	N/A	89.2
7207060	GEORGE JUNIOR HIGH SCHOOL	91.5%	14.3%	3.6%	17.9%	N/A	88.1
6001027	GIBBS MAGNET ELEMENTARY SCHOOL	73.6%	25.0%	0.0%	10.0%	N/A	88.3
6002056	GLENVIEW ELEMENTARY SCHOOL	96.8%	33.3%	0.0%	20.8%	N/A	81.9
0405040	GRACE HILL ELEMENTARY SCHOOL	66.1%	15.1%	3.8%	9.4%	N/A	90.6
6052703	GRADUATE ARKANSAS CHARTER HIGH	92.3%	80.0%	0.0%	140.0%	N/A	26.7
0803012	GREEN FOREST HIGH SCHOOL	60.5%	54.0%	1.6%	46.0%	N/A	66.1
7207058	HARP ELEMENTARY SCHOOL	76.2%	17.9%	0.0%	7.1%	N/A	91.7
6003102	HARRIS ELEMENTARY SCHOOL	94.4%	63.6%	4.5%	18.2%	N/A	71.2
6601030	HARRY C. MORRISON ELEMENTARY SCHOOL	83.9%	12.2%	0.0%	8.2%	N/A	93.2
1608020	HEALTH/WELLNESS ENVI MAGNET	70.3%	26.3%	0.0%	8.8%	N/A	88.3
7207055	HELEN TYSON MIDDLE SCHOOL	75.5%	22.2%	0.0%	20.6%	N/A	85.7
6001013	HENDERSON MIDDLE SCHOOL	95.2%	20.8%	1.9%	18.9%	N/A	86.2
1804023	HERBERT CARTER GLOBAL COMMUNITY MAGNET SCHOOL	62.9%	27.5%	0.0%	17.5%	N/A	85.0
2903013	HOPE ACADEMY OF PUBLIC SERVICE	71.2%	22.7%	4.5%	45.5%	N/A	75.8
2903012	HOPE HIGH SCHOOL	80.8%	57.3%	1.3%	16.0%	N/A	75.1
2603702	HOT SPRINGS JUNIOR ACADEMY	67.3%	27.2%	0.0%	8.6%	N/A	88.1
2603703	HOT SPRINGS WORLD CLASS HIGH SCHOOL	63.6%	46.5%	1.2%	22.1%	N/A	76.7
6601011	HOWARD ELEMENTARY SCHOOL	82.9%	9.8%	0.0%	9.8%	N/A	93.5
5204025	IVORY PRIMARY SCHOOL	72.7%	35.0%	0.0%	35.0%	N/A	76.7
6060701	IVY HILL ACADEMY OF SCHOLARSHIP	99.5%	100.0%	0.0%	73.3%	N/A	42.2
7207054	J. O. KELLY MIDDLE SCHOOL	92.7%	16.9%	5.1%	22.0%	N/A	85.3
5403023	J.F. WAHL ELEMENTARY SCHOOL	94.6%	17.9%	0.0%	15.4%	N/A	88.9
3505044	JACK ROBNEY MIDDLE SCHOOL	99.4%	51.7%	5.2%	20.7%	N/A	74.1
1803038	JACKSON/WONDER ELEMENTARY SCHOOL	99.4%	16.1%	0.0%	25.8%	N/A	86.0
6004009	JACKSONVILLE HIGH SCHOOL	69.9%	77.3%	0.0%	34.0%	N/A	62.9
6050703	JACKSONVILLE LIGHTHOUSE COLLEGE PREP ACADEMY HIGH	84.5%	80.0%	0.0%	46.7%	N/A	57.8
6050701	JACKSONVILLE LIGHTHOUSE ELEMENTARY	84.3%	93.3%	0.0%	46.7%	N/A	53.3
6004008	JACKSONVILLE MIDDLE SCHOOL	67.6%	69.3%	2.7%	21.3%	N/A	68.9
0405044	JOE MATHIAS ELEMENTARY SCHOOL	68.6%	15.0%	3.3%	8.3%	N/A	91.1
7207044	JOHN TYSON ELEMENTARY SCHOOL	75.5%	18.5%	0.0%	18.5%	N/A	87.7
7207041	JONES ELEMENTARY SCHOOL	92.4%	17.2%	0.0%	17.2%	N/A	88.5
0405049	JONES ELEMENTARY SCHOOL	79.1%	14.6%	4.2%	6.3%	N/A	91.7
1608026	KINDERGARTEN CENTER	64.6%	41.7%	0.0%	25.0%	N/A	77.8
5440706	KIPP BLYTHEVILLE COLLEGIATE HIGH SCHOOL	88.6%	86.2%	0.0%	65.5%	N/A	49.4
5440701	KIPP DELTA ELEM LITERACY ACAD	93.3%	76.0%	0.0%	44.0%	N/A	60.0
5440705	KIPP: BLYTHEVILLE COLLEGE PREP	91.7%	76.9%	0.0%	30.8%	N/A	64.1
5440702	KIPP:DELTA COLLEGE PREP SCHOOL	93.8%	100.0%	0.0%	31.3%	N/A	56.3
5440703	KIPP:DELTA COLLEGIATE HIGH SCHOOL	95.7%	83.3%	0.0%	38.9%	N/A	59.3
0405045	KIRKSEY MIDDLE SCHOOL	61.1%	25.0%	6.9%	12.5%	N/A	85.2
3509064	L. L. OWEN ELEMENTARY SCHOOL	88.4%	8.7%	0.0%	4.3%	N/A	95.7
3704007	LAFAYETTE COUNTY ELEMENTARY	66.8%	28.6%	4.8%	33.3%	N/A	77.8
3704013	LAFAYETTE COUNTY HIGH SCHOOL	62.4%	70.9%	0.0%	27.3%	N/A	67.3
0903016	LAKESIDE ELEMENTARY SCHOOL	90.2%	21.4%	3.6%	35.7%	N/A	79.8
0903018	LAKESIDE HIGH SCHOOL	88.0%	56.1%	0.0%	10.5%	N/A	77.8
7207070	LAKESIDE JUNIOR HIGH SCHOOL	76.4%	25.4%	0.0%	25.4%	N/A	83.1
0903017	LAKESIDE MIDDLE SCHOOL	91.9%	20.0%	0.0%	16.0%	N/A	88.0
6003104	LANDMARK ELEMENTARY SCHOOL	68.9%	76.7%	3.3%	33.3%	N/A	62.2
2603023	LANGSTON ELEMENTARY LEADERSHIP ACADEMY MAGNET SCHOOL	80.2%	43.3%	0.0%	30.0%	N/A	75.6
3904011	LEE HIGH SCHOOL	91.5%	45.5%	9.1%	122.7%	N/A	40.9
6201016	LINCOLN ACADEMY	96.1%	45.5%	0.0%	54.5%	N/A	66.7
7207071	LINDA CHILDERS KNAPP ELEMENTARY SCHOOL	88.6%	15.4%	0.0%	17.9%	N/A	88.9
6041701	LISA ACADEMY NORTH ELEMENTARY SCHOOL	75.0%	80.9%	0.0%	19.1%	N/A	66.7
6041706	LISA ACADEMY NORTH HIGH SCHOOL	71.3%	83.6%	0.0%	23.0%	N/A	64.5
6041705	LISA ACADEMY NORTH MIDDLE SCHOOL	74.5%	75.8%	0.0%	36.4%	N/A	62.6
6041708	LISA ACADEMY SPRINGDALE	60.0%	70.8%	0.0%	112.5%	N/A	38.9
6041707	LISA ACADEMY WEST ELEMENTARY SCHOOL	90.1%	58.8%	0.0%	44.1%	N/A	65.7

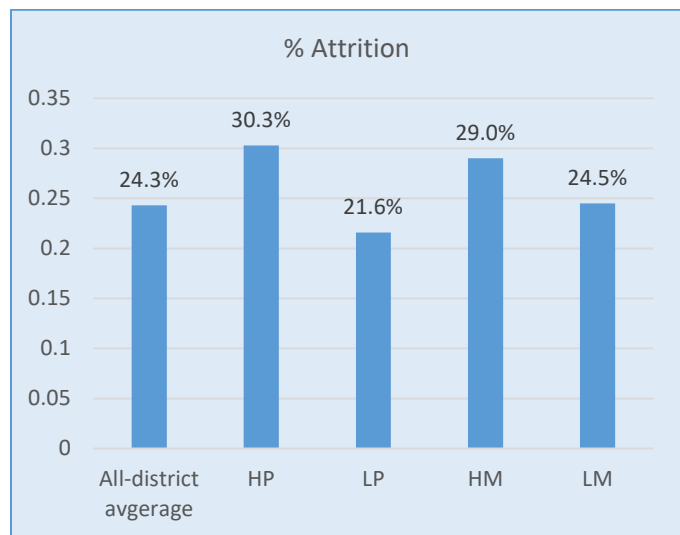
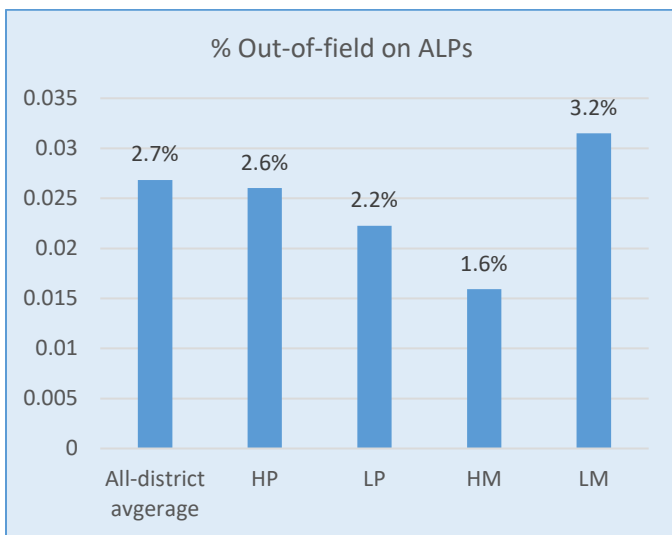
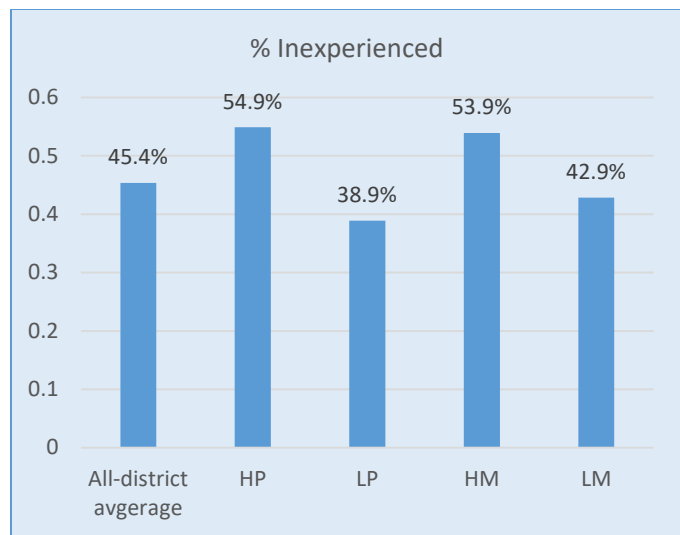
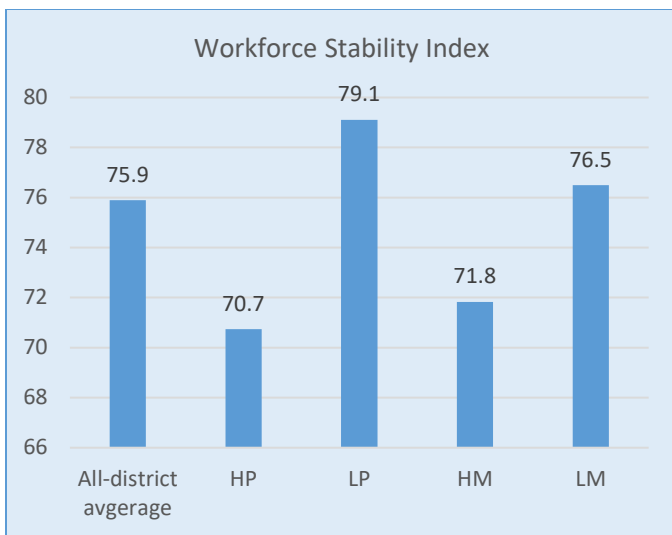
6041703	LISA ACADEMY WEST HIGH SCHOOL	82.1%	78.5%	0.0%	12.7%	N/A	69.6
6041702	LISA ACADEMY WEST MIDDLE SCHOOL	88.9%	65.7%	0.0%	17.1%	N/A	72.4
6001083	LITTLE ROCK HALL STEAM MAGNET HIGH SCHOOL	96.1%	42.5%	6.8%	0.0%	N/A	83.6
6001082	LITTLE ROCK SOUTHWEST HIGH SCHOOL	95.1%	37.4%	4.7%	0.0%	N/A	86.0
6001081	LITTLE ROCK WEST HIGH SCHOOL OF INNOVATION	67.5%	54.5%	0.0%	16.4%	N/A	76.4
0405033	LOWELL ELEMENTARY SCHOOL	65.6%	8.5%	2.1%	10.6%	N/A	92.9
6001035	M.L. KING ELEMENTARY SCHOOL	97.3%	26.1%	0.0%	17.4%	N/A	85.5
6001057	MABELVALE ELEMENTARY SCHOOL	93.9%	40.0%	0.0%	28.0%	N/A	77.3
6001062	MABELVALE MIDDLE SCHOOL	97.1%	30.2%	0.0%	20.8%	N/A	83.0
1803028	MADDUX ELEMENTARY SCHOOL	99.3%	16.7%	0.0%	23.3%	N/A	86.7
1402009	MAGNOLIA HIGH SCHOOL	60.1%	41.1%	0.0%	8.4%	N/A	83.5
1402008	MAGNOLIA MIDDLE SCHOOL	67.1%	43.8%	0.0%	42.2%	N/A	71.4
2603015	MAIN STREET VISUAL & PERFORMING ARTS MAGNET SCHOOL	69.5%	41.5%	0.0%	18.9%	N/A	79.9
6001003	MANN MAGNET MIDDLE SCHOOL	95.9%	43.9%	9.1%	21.2%	N/A	75.3
1804024	MARION VISUAL & PERFORMING ARTS MAGNET SCHOOL	78.0%	27.7%	0.0%	29.8%	N/A	80.9
1804015	MARION HIGH SCHOOL	62.9%	35.5%	3.9%	31.6%	N/A	76.3
1804014	MARION JUNIOR HIGH SCHOOL	66.4%	34.5%	2.3%	28.7%	N/A	78.2
1804025	MARION MATH, SCIENCE & TECHNOLOGY MAGNET SCHOOL	63.5%	38.6%	0.0%	38.6%	N/A	74.2
5404030	MARVELL-ELAINE ELEMENTARY SCH	91.5%	0.0%	9.1%	54.5%	N/A	78.8
5404032	MARVELL-ELAINE HIGH SCHOOL	91.1%	25.0%	0.0%	25.0%	N/A	83.3
1608017	MATH & SCIENCE MAGNET SCHOOL	81.8%	21.2%	0.0%	15.4%	N/A	87.8
3502006	MATTHEWS ELEMENTARY SCHOOL	93.4%	44.0%	0.0%	36.0%	N/A	73.3
6003149	MAUMELLE MIDDLE SCHOOL	64.1%	71.9%	5.3%	21.1%	N/A	67.3
6001020	MCDERMOTT ELEMENTARY SCHOOL	93.9%	47.4%	0.0%	26.3%	N/A	75.4
6002061	MEADOW PARK ELEMENTARY SCHOOL	93.1%	65.4%	0.0%	15.4%	N/A	73.1
6001033	MEADOWCLIFF ELEMENTARY SCHOOL	97.0%	58.8%	5.9%	41.2%	N/A	64.7
0104023	MEEKINS MIDDLE SCHOOL	61.2%	48.1%	0.0%	14.8%	N/A	79.0
1608022	MICROSOCIETY MAGNET SCHOOL	85.7%	30.6%	0.0%	22.4%	N/A	82.3
6003120	MILLS MIDDLE SCHOOL	83.3%	92.9%	11.9%	19.0%	N/A	58.7
6003125	MILLS UNIVERSITY STUDIES HIGH SCHOOL	81.9%	89.1%	3.1%	25.0%	N/A	60.9
3104005	MINERAL SPRINGS ELEM. SCHOOL	87.1%	5.3%	0.0%	26.3%	N/A	89.5
3104006	MINERAL SPRINGS HIGH SCHOOL	82.4%	45.0%	0.0%	17.5%	N/A	79.2
7207065	MONITOR ELEMENTARY	73.3%	13.5%	5.4%	16.2%	N/A	88.3
6004005	MURRELL TAYLOR ELEMENTARY SCHOOL	79.3%	75.7%	0.0%	27.0%	N/A	65.8
1611042	NETTLETON HIGH SCHOOL	63.5%	45.3%	0.0%	13.2%	N/A	80.5
1611041	NETTLETON JUNIOR HIGH SCHOOL	67.8%	27.1%	2.1%	22.9%	N/A	82.6
6060702	NICHOLS INTERMEDIATE ACADEMY OF LEADERSHIP	100.0%	100.0%	0.0%	100.0%	N/A	33.3
4713052	NORTH ELEMENTARY SCHOOL	84.8%	81.8%	0.0%	27.3%	N/A	63.6
4605025	NORTH HEIGHTS JR. HIGH SCHOOL	66.8%	50.0%	5.0%	16.7%	N/A	76.1
6002703	NORTH LITTLE ROCK CENTER OF EXCELLENCE	82.0%	50.0%	0.0%	15.4%	N/A	78.2
6002082	NORTH LITTLE ROCK HIGH SCHOOL	72.1%	47.2%	2.5%	34.0%	N/A	72.1
6002070	NORTH LITTLE ROCK MIDDLE SCHOOL	73.9%	54.5%	3.0%	24.2%	N/A	72.7
6002071	NORTH LITTLE ROCK MIDDLE SCHOOL 6TH GRADE CAMPUS	73.9%	37.5%	0.0%	28.6%	N/A	78.0
6601024	NORTHSIDE HIGH SCHOOL	73.9%	10.7%	0.0%	13.1%	N/A	92.1
0405039	OAKDALE MIDDLE SCHOOL	66.0%	27.8%	4.4%	14.4%	N/A	84.4
5805020	OAKLAND HEIGHTS ELEM. SCHOOL	61.6%	9.1%	0.0%	12.1%	N/A	92.9
0405051	OLD WIRE ELEMENTARY SCHOOL	81.4%	4.3%	6.5%	15.2%	N/A	91.3
4713051	OSCEOLA HIGH SCHOOL	89.7%	45.7%	0.0%	31.4%	N/A	74.3
4713705	OSCEOLA STEM CHARTER	93.6%	80.0%	0.0%	40.0%	N/A	60.0
6001058	OTTER CREEK ELEMENTARY SCHOOL	95.2%	19.0%	0.0%	23.8%	N/A	85.7
0104021	PARK AVENUE ELEMENTARY SCHOOL	63.9%	34.9%	0.0%	27.9%	N/A	79.1
6001005	PARKVIEW MAGNET HIGH SCHOOL	86.6%	31.9%	3.5%	22.1%	N/A	80.8
7207050	PARSON HILLS ELEM. SCHOOL	90.0%	16.7%	0.0%	10.0%	N/A	91.1
3505042	PINE BLUFF HIGH SCHOOL	97.6%	44.8%	0.0%	29.9%	N/A	75.1
3541703	PINE BLUFF LIGHTHOUSE COLLEGE PREP ACADEMY HIGH SCHOOL	97.1%	100.0%	0.0%	33.3%	N/A	55.6
3541701	PINE BLUFF LIGHTHOUSE ELEMENTARY	99.3%	91.7%	0.0%	41.7%	N/A	55.6
6004007	PINEWOOD ELEMENTARY SCHOOL	71.8%	70.6%	0.0%	14.7%	N/A	71.6
6001076	PINNACLE VIEW MIDDLE SCHOOL	61.1%	52.4%	0.0%	28.0%	N/A	73.2
6053703	PREMIER HIGH SCHOOL OF LITTLE ROCK	92.0%	100.0%	0.0%	60.0%	N/A	46.7
6062703	PREMIER HIGH SCHOOL OF NORTH LITTLE ROCK	70.6%	100.0%	0.0%	0.0%	N/A	66.7
6060703	PRODIGY PREPARATORY ACADEMY OF SERVICE	100.0%	100.0%	0.0%	0.0%	N/A	66.7

2104024	REED ELEMENTARY SCHOOL	82.8%	73.3%	3.3%	13.3%	N/A	70.0
6002084	RIDGE ROAD ELEMENTARY SCHOOL	86.8%	62.1%	0.0%	31.0%	N/A	69.0
7207042	ROBERT E. LEE ELEM. SCHOOL	86.0%	16.7%	0.0%	33.3%	N/A	83.3
3502009	ROBERT F MOREHEAD MIDDLE SCHOO	96.9%	66.7%	11.1%	55.6%	N/A	55.6
6001040	ROMINE ELEMENTARY SCHOOL	97.3%	58.8%	0.0%	29.4%	N/A	70.6
6002069	SEVENTH STREET ELEM. SCHOOL	97.5%	65.2%	0.0%	43.5%	N/A	63.8
7207069	SONORA MIDDLE SCHOOL	79.8%	22.8%	1.8%	17.5%	N/A	86.0
7207048	SOUTHWEST JUNIOR HIGH SCHOOL	75.3%	25.9%	5.6%	27.8%	N/A	80.2
3505051	SOUTHWOOD ELEMENTARY SCHOOL	98.2%	21.2%	0.0%	33.3%	N/A	81.8
6601016	SPRADLING ELEMENTARY SCHOOL	82.4%	18.0%	0.0%	12.0%	N/A	90.0
7207049	SPRINGDALE HIGH SCHOOL	80.8%	17.0%	1.7%	17.6%	N/A	87.9
6001041	STEPHENS ELEMENTARY	94.6%	22.2%	3.7%	18.5%	N/A	85.2
6201014	STEWART ELEMENTARY SCHOOL	94.1%	41.7%	0.0%	37.5%	N/A	73.6
7009050	STRONG-HUTTIG SCHOOLS	79.9%	35.0%	2.5%	10.0%	N/A	84.2
6601017	SUNNYMEDE ELEMENTARY SCHOOL	86.1%	19.6%	0.0%	21.4%	N/A	86.3
6601018	SUTTON ELEMENTARY SCHOOL	84.2%	8.1%	0.0%	6.5%	N/A	95.2
6003122	SYLVAN HILLS MIDDLE SCHOOL	60.2%	80.5%	2.6%	16.9%	N/A	66.7
6001047	TERRY ELEMENTARY SCHOOL	86.7%	29.2%	4.2%	16.7%	N/A	83.3
1608027	THE ACADEMIES AT JONESBORO HIGH SCHOOL	65.0%	25.4%	0.0%	11.5%	N/A	87.7
1803703	THE ACADEMIES OF WEST MEMPHIS CHARTER SCHOOL	78.0%	22.1%	0.0%	22.1%	N/A	85.3
6058703	THE EXCEL CENTER	85.0%	57.1%	0.0%	57.1%	N/A	61.9
3505036	THIRTY-FOURTH STREET ELEMENTARY SCHOOL	99.6%	10.3%	3.4%	6.9%	N/A	93.1
0602017	THOMAS C BRUNSON ELEMENTARY SCHOOL	66.4%	40.9%	4.5%	31.8%	N/A	74.2
7207051	THURMAN G. SMITH ELEM. SCHOOL	67.9%	21.9%	3.1%	21.9%	N/A	84.4
6601032	TILLES ELEMENTARY SCHOOL	76.8%	14.9%	0.0%	17.0%	N/A	89.4
6601019	TRUSTY ELEMENTARY SCHOOL	87.6%	18.4%	0.0%	4.1%	N/A	92.5
7207064	TURNBOW ELEMENTARY SCHOOL	81.3%	21.2%	0.0%	30.3%	N/A	82.8
4605022	UNION ELEMENTARY SCHOOL	65.9%	40.0%	0.0%	46.7%	N/A	71.1
1611043	UNIVERSITY HEIGHTS SCHOOL OF MEDICAL ARTS	69.8%	51.5%	6.1%	15.2%	N/A	75.8
1611040	UNIVERSITY HGTS. ELEM. SCHOOL	68.5%	26.3%	5.3%	7.9%	N/A	86.8
4605021	VERA KILPATRICK ELEM. SCHOOL	85.5%	40.5%	0.0%	24.3%	N/A	78.4
1608019	VISUAL & PERFORMING ART MAGNET	63.1%	21.7%	0.0%	10.0%	N/A	89.4
6001059	WAKEFIELD ELEMENTARY SCHOOL	98.1%	42.3%	0.0%	11.5%	N/A	82.1
6004004	WARREN DUPREE ELEMENTARY SCHOOL	76.9%	75.0%	8.3%	25.0%	N/A	63.9
0602702	WARREN MIDDLE SCHOOL	64.0%	27.6%	0.0%	31.0%	N/A	80.5
6001042	WASHINGTON ELEMENTARY SCHOOL	96.3%	45.8%	0.0%	37.5%	N/A	72.2
7001011	WASHINGTON MIDDLE SCHOOL	66.1%	46.9%	0.0%	26.5%	N/A	75.5
3509067	WATSON CHAPEL HIGH SCHOOL	87.9%	55.4%	0.0%	21.5%	N/A	74.4
3509068	WATSON CHAPEL JR. HIGH SCHOOL	90.2%	43.1%	2.0%	21.6%	N/A	77.8
6001078	WATSON ELEMENTARY SCHOOL	98.6%	50.0%	0.0%	50.0%	N/A	66.7
1803030	WEAVER ELEMENTARY SCHOOL	99.0%	35.0%	0.0%	10.0%	N/A	85.0
1803034	WEST JUNIOR HIGH SCHOOL	60.4%	30.4%	0.0%	10.9%	N/A	86.2
6001029	WESTERN HILLS ELEM. SCHOOL	95.8%	50.0%	0.0%	50.0%	N/A	66.7
0405036	WESTSIDE ELEMENTARY SCHOOL	60.3%	13.3%	11.1%	13.3%	N/A	87.4
7207046	WESTWOOD ELEMENTARY SCHOOL	76.1%	12.0%	0.0%	32.0%	N/A	85.3
6601021	WILLIAM O. DARBY JR. HIGH SCH.	73.5%	18.6%	0.0%	14.3%	N/A	89.0
6001043	WILLIAMS MAGNET ELEM. SCHOOL	68.1%	33.3%	0.0%	37.5%	N/A	76.4
2903007	WM. JEFFERSON CLINTON PRIMARY SCHOOL	80.3%	38.5%	0.0%	25.0%	N/A	78.8
1803035	WONDER JUNIOR HIGH SCHOOL	98.2%	23.8%	2.4%	21.4%	N/A	84.1
2903011	YERGER JUNIOR HIGH SCHOOL	81.2%	23.8%	0.0%	9.5%	N/A	88.9
7001009	YOCUM ELEMENTARY SCHOOL	80.6%	43.6%	0.0%	28.2%	N/A	76.1

VI. Districts, WSI scores - 2020-2021

Average **District** scores for each of the WSI factors in each of the identified populations (2020-2021 school year) are presented in the figures below.³

³ For the 20-21 school year there were no TESS ratings for ineffectiveness so there is no chart for the ineffectiveness factor.



VII. Districts - 3-yr WSI scores

Districts	% Inexperienced			% Out-of-field on ALPs			% Ineffective			% Attrition			Workforce Stability Index		
	18-19	19-20	20-21	18-19	19-20	20-21	18-19	19-20	20-21	18-19	19-20	20-21	18-19	19-20	20-21
All-District average	17.6%	14.9%	45.4%	2.2%	2.2%	2.7%	0.0%	0.2%	N/A	20.8%	18.6%	24.3%	89.9	91.0	75.9
HP	19.5%	17.8%	54.9%	3.0%	2.6%	2.6%	0.0%	0.6%	N/A	28.3%	24.8%	30.3%	87.3	88.6	70.7
LP	17.4%	15.1%	38.9%	1.4%	2.1%	2.2%	0.0%	0.2%	N/A	17.1%	15.8%	21.6%	91.0	91.7	79.1
HM	24.6%	21.5%	53.9%	2.1%	1.9%	1.6%	0.0%	0.2%	N/A	21.1%	20.3%	29.0%	88.0	89.0	71.8
LM	11.8%	10.2%	42.9%	3.4%	2.5%	3.2%	0.1%	0.4%	N/A	23.7%	17.6%	24.5%	90.2	92.3	76.5

VIII. Districts, High-Poverty - 2020-2021

The following tables represent the data found in all HP Districts.

Table 3. High-Poverty Districts

WSI (RED) < All-District average of 75.9

District LEA	District Name	% F/RL	% Inexp.	% ALPs	% Attrition	% Ineff.	WSI
7401000	AUGUSTA SCHOOL DISTRICT	86.7%	38.6%	2.3%	31.8%	N/A	75.8
5401000	BARTON SCHOOL DISTRICT	85.6%	47.6%	1.2%	22.6%	N/A	76.2
2901000	BLEVINS SCHOOL DISTRICT	83.0%	49.0%	2.0%	73.5%	N/A	58.5

4702000	BLYTHEVILLE SCHOOL DISTRICT	79.6%	35.9%	3.2%	25.0%	N/A	78.6
7303000	BRADFORD SCHOOL DISTRICT	78.4%	40.8%	2.0%	40.8%	N/A	72.1
4801000	BRINKLEY SCHOOL DISTRICT	78.6%	46.8%	2.1%	17.0%	N/A	78.0
4901000	CADDO HILLS SCHOOL DISTRICT	76.0%	46.2%	6.4%	29.5%	N/A	72.6
3301000	CALICO ROCK SCHOOL DISTRICT	76.8%	61.4%	0.0%	35.7%	N/A	67.6
5204000	CAMDEN FAIRVIEW SCHOOL DISTRICT	77.7%	38.0%	1.1%	22.9%	N/A	79.3
6056700	CAPITAL CITY LIGHTHOUSE ACADEMY	76.4%	100.0%	0.0%	25.0%	N/A	58.3
6802000	CAVE CITY SCHOOL DISTRICT	76.5%	27.8%	2.8%	20.4%	N/A	83.0
4802000	CLARENDON SCHOOL DISTRICT	92.4%	47.5%	3.3%	27.9%	N/A	73.8
5707000	COSSATOT RIVER SCHOOL DISTRICT	76.1%	62.1%	1.8%	25.4%	N/A	70.2
7503000	DANVILLE SCHOOL DISTRICT	82.2%	42.9%	4.8%	19.0%	N/A	77.8
0402000	DECATUR SCHOOL DISTRICT	78.8%	52.3%	10.2%	38.6%	N/A	66.3
0901000	DERMOTT SCHOOL DISTRICT	94.3%	78.2%	0.0%	7.9%	N/A	71.3
3102000	DIERKS SCHOOL DISTRICT	78.2%	36.2%	0.0%	29.3%	N/A	78.2
6094000	DIVISION OF YOUTH SERVICES SCHOOL SYSTEM	100.0%	100.0%	0.0%	24.3%	N/A	58.6
3502000	DOLLARWAY SCHOOL DISTRICT	93.2%	53.2%	8.5%	34.0%	N/A	68.1
2104000	DUMAS SCHOOL DISTRICT	79.8%	82.6%	0.7%	26.4%	N/A	63.4
1802000	EARLE SCHOOL DISTRICT	95.1%	61.4%	9.1%	63.6%	N/A	55.3
5608000	EAST POINSETT CO. SCHOOL DIST.	76.7%	40.3%	4.2%	8.3%	N/A	82.4
4302000	ENGLAND SCHOOL DISTRICT	75.9%	57.6%	1.2%	27.1%	N/A	71.4
6055700	EXALT ACADEMY OF SOUTHWEST LITTLE ROCK	95.8%	79.2%	0.0%	27.1%	N/A	64.6
6201000	FORREST CITY SCHOOL DISTRICT	82.5%	44.2%	0.0%	38.0%	N/A	72.6
6061700	FRIENDSHIP ASPIRE ACADEMY LITTLE ROCK	97.8%	100.0%	0.0%	78.6%	N/A	40.5
3544700	FRIENDSHIP ASPIRE ACADEMY PINE BLUFF	93.4%	80.0%	0.0%	13.3%	N/A	68.9
3545700	FRIENDSHIP ASPIRE ACADEMY SOUTHEAST PINE BLUFF	93.2%	100.0%	0.0%	0.0%	N/A	66.7
6052700	GRADUATE ARKANSAS CHARTER	81.3%	80.0%	0.0%	140.0%	N/A	26.7
0803000	GREEN FOREST SCHOOL DISTRICT	84.6%	40.4%	4.3%	31.9%	N/A	74.5
5403000	HELENA/ WEST HELENA SCHOOL DISTRICT	96.4%	28.6%	0.0%	20.2%	N/A	83.7
0445700	HOPE ACADEMY OF NORTHWEST ARKANSAS	100.0%	80.0%	0.0%	0.0%	N/A	73.3
2903000	HOPE SCHOOL DISTRICT	82.8%	46.8%	0.9%	19.4%	N/A	77.6
6703000	HORATIO SCHOOL DISTRICT	78.7%	26.3%	1.3%	15.0%	N/A	85.8
2603000	HOT SPRINGS SCHOOL DISTRICT	82.5%	39.4%	0.3%	23.7%	N/A	78.8
3306000	IZARD COUNTY CONSOLIDATED SCHOOL DISTRICT	77.9%	37.0%	4.1%	28.8%	N/A	76.7
5440700	KIPP DELTA PUBLIC SCHOOLS	89.8%	84.2%	0.0%	45.5%	N/A	56.8
3704000	LAFAYETTE COUNTY SCHOOL DISTRICT	84.2%	59.2%	1.3%	28.9%	N/A	70.2
0903000	LAKESIDE SCHOOL DIST(CHICOT)	83.6%	36.3%	0.8%	17.7%	N/A	81.7
0506000	LEAD HILL SCHOOL DISTRICT	77.1%	66.0%	4.0%	62.0%	N/A	56.0
3904000	LEE COUNTY SCHOOL DISTRICT	90.9%	41.3%	4.3%	78.3%	N/A	58.7
4202000	MAGAZINE SCHOOL DISTRICT	78.9%	64.6%	2.1%	13.5%	N/A	73.3
5604000	MARKED TREE SCHOOL DISTRICT	85.4%	48.8%	0.0%	39.5%	N/A	70.5
5404000	MARVELL-ELAINE SCHOOL DISTRICT	97.3%	16.1%	3.2%	35.5%	N/A	81.7
3104000	MINERAL SPRINGS SCHOOL DISTRICT	89.8%	32.2%	0.0%	20.3%	N/A	82.5
2607000	MOUNTAIN PINE SCHOOL DISTRICT	82.9%	54.8%	4.1%	23.3%	N/A	72.6
5008000	NEVADA SCHOOL DISTRICT	76.3%	56.1%	4.5%	18.2%	N/A	73.7
3403000	NEWPORT SCHOOL DISTRICT	78.4%	36.9%	2.7%	17.1%	N/A	81.1
0304000	NORFORK SCHOOL DISTRICT	77.0%	60.4%	4.2%	16.7%	N/A	72.9
4713000	OSCEOLA SCHOOL DISTRICT	89.9%	56.1%	0.0%	27.6%	N/A	72.1
6205000	PALESTINE-WHEATLEY SCH. DIST.	85.4%	19.2%	7.7%	23.1%	N/A	83.3
3541700	PINE BLUFF LIGHTHOUSE ACADEMY	91.4%	94.4%	0.0%	38.9%	N/A	55.6
3505000	PINE BLUFF SCHOOL DISTRICT	85.0%	34.9%	1.9%	24.1%	N/A	79.7
5006000	PRESCOTT SCHOOL DISTRICT	75.8%	44.7%	0.8%	28.5%	N/A	75.3
6053700	RESPONSIVE ED SOLUTIONS PREM. HS OF LITTLE ROCK	82.4%	100.0%	0.0%	60.0%	N/A	46.7
6062700	RESPONSIVE ED SOLUTIONS PREM. HS OF NORTH LITTLE ROCK	86.0%	100.0%	0.0%	0.0%	N/A	66.7
4706000	RIVERCREST SCHOOL DISTRICT	75.4%	38.7%	3.6%	36.0%	N/A	73.9
6060700	SCHOLARMADE ACHIEVEMENT PLACE OF ARKANSAS	93.1%	100.0%	0.0%	62.9%	N/A	45.7

7104000	SHIRLEY SCHOOL DISTRICT	83.4%	56.8%	34.1%	59.1%	N/A	50.0
7105000	SOUTH SIDE SCHOOL DISTRICT(VANBUREN)	78.7%	48.6%	1.4%	12.9%	N/A	79.0
7009000	STRONG-HUTTIG SCHOOL DISTRICT	93.2%	35.0%	2.5%	10.0%	N/A	84.2
7510000	TWO RIVERS SCHOOL DISTRICT	81.2%	48.2%	6.0%	25.3%	N/A	73.5
2503000	VIOLA SCHOOL DISTRICT	76.2%	31.3%	4.2%	10.4%	N/A	84.7
6401000	WALDRON SCHOOL DISTRICT	79.4%	25.2%	0.0%	16.0%	N/A	86.3
3509000	WATSON CHAPEL SCHOOL DISTRICT	78.6%	37.9%	0.5%	17.4%	N/A	81.4
7509000	WESTERN YELL CO. SCHOOL DIST.	90.9%	66.7%	0.0%	17.5%	N/A	72.0

IX. Districts, High-Minority - 2020-2021

The following tables represent the data found in all HM districts.

Table 4. High-Minority Districts

WSI (RED) < All-District average of 75.9

District LEA	District Name	% Minority	% Inexp.	% ALPs	% Attrition	% Ineff.	WSI
1002000	ARKADELPHIA SCHOOL DISTRICT	50.3%	36.5%	2.5%	25.2%	N/A	78.6
7401000	AUGUSTA SCHOOL DISTRICT	60.4%	38.6%	2.3%	31.8%	N/A	75.8
4702000	BLYTHEVILLE SCHOOL DISTRICT	87.3%	35.9%	3.2%	25.0%	N/A	78.6
4801000	BRINKLEY SCHOOL DISTRICT	73.1%	46.8%	2.1%	17.0%	N/A	78.0
5204000	CAMDEN FAIRVIEW SCHOOL DISTRICT	70.9%	38.0%	1.1%	22.9%	N/A	79.3
6056700	CAPITAL CITY LIGHTHOUSE ACADEMY	96.9%	100.0%	0.0%	25.0%	N/A	58.3
4802000	CLARENDON SCHOOL DISTRICT	67.7%	47.5%	3.3%	27.9%	N/A	73.8
3601000	CLARKSVILLE SCHOOL DISTRICT	50.2%	25.0%	1.0%	16.8%	N/A	85.7
7503000	DANVILLE SCHOOL DISTRICT	56.4%	42.9%	4.8%	19.0%	N/A	77.8
0402000	DECATUR SCHOOL DISTRICT	53.0%	52.3%	10.2%	38.6%	N/A	66.3
6701000	DEQUEEN SCHOOL DISTRICT	71.8%	15.8%	0.0%	12.8%	N/A	90.5
0901000	DERMOTT SCHOOL DISTRICT	96.5%	78.2%	0.0%	7.9%	N/A	71.3
6094000	DIVISION OF YOUTH SERVICES SCHOOL SYSTEM	53.2%	100.0%	0.0%	24.3%	N/A	58.6
3502000	DOLLARWAY SCHOOL DISTRICT	95.6%	53.2%	8.5%	34.0%	N/A	68.1
2104000	DUMAS SCHOOL DISTRICT	81.0%	82.6%	0.7%	26.4%	N/A	63.4
1802000	EARLE SCHOOL DISTRICT	98.2%	61.4%	9.1%	63.6%	N/A	55.3
7001000	EL DORADO SCHOOL DISTRICT	63.2%	38.5%	0.3%	24.3%	N/A	79.0
6047700	ESTEM PUBLIC CHARTER SCHOOL	79.0%	100.0%	1.7%	36.3%	N/A	54.0
6055700	EXALT ACADEMY OF SOUTHWEST LITTLE ROCK	98.3%	79.2%	0.0%	27.1%	N/A	64.6
2002000	FORDYCE SCHOOL DISTRICT	62.1%	54.7%	1.9%	26.4%	N/A	72.3
6201000	FORREST CITY SCHOOL DISTRICT	94.3%	44.2%	0.0%	38.0%	N/A	72.6
6601000	FORT SMITH SCHOOL DISTRICT	60.6%	13.0%	0.6%	10.6%	N/A	91.9
6061700	FRIENDSHIP ASPIRE ACADEMY LITTLE ROCK	99.0%	100.0%	0.0%	78.6%	N/A	40.5
3544700	FRIENDSHIP ASPIRE ACADEMY PINE BLUFF	97.5%	80.0%	0.0%	13.3%	N/A	68.9
3545700	FRIENDSHIP ASPIRE ACADEMY SOUTHEAST PINE BLUFF	97.3%	100.0%	0.0%	0.0%	N/A	66.7
6640700	FUTURE SCHOOL OF FORT SMITH	53.7%	95.0%	0.0%	35.0%	N/A	56.7
6052700	GRADUATE ARKANSAS CHARTER	92.3%	80.0%	0.0%	140.0%	N/A	26.7
0803000	GREEN FOREST SCHOOL DISTRICT	58.8%	40.4%	4.3%	31.9%	N/A	74.5
5403000	HELENA/ WEST HELENA SCHOOL DISTRICT	95.7%	28.6%	0.0%	20.2%	N/A	83.7
2903000	HOPE SCHOOL DISTRICT	80.1%	46.8%	0.9%	19.4%	N/A	77.6
2603000	HOT SPRINGS SCHOOL DISTRICT	66.1%	39.4%	0.3%	23.7%	N/A	78.8
6050700	JACKSONVILLE LIGHTHOUSE CHARTER	80.6%	90.0%	0.0%	50.0%	N/A	53.3
6004000	JACKSONVILLE NORTH PULASKI SCHOOL DISTRICT	66.2%	71.4%	1.9%	25.1%	N/A	67.2
1608000	JONESBORO SCHOOL DISTRICT	66.5%	27.6%	0.0%	15.3%	N/A	85.7
5440700	KIPP DELTA PUBLIC SCHOOLS	92.9%	84.2%	0.0%	45.5%	N/A	56.8
3704000	LAFAYETTE COUNTY SCHOOL DISTRICT	64.9%	59.2%	1.3%	28.9%	N/A	70.2
0903000	LAKESIDE SCHOOL DIST(CHICOT)	91.0%	36.3%	0.8%	17.7%	N/A	81.7

3904000	LEE COUNTY SCHOOL DISTRICT	91.2%	41.3%	4.3%	78.3%	N/A	58.7
6041700	LISA ACADEMY	79.4%	75.4%	0.0%	29.7%	N/A	65.0
6001000	LITTLE ROCK SCHOOL DISTRICT	80.7%	35.7%	2.0%	18.6%	N/A	81.2
1402000	MAGNOLIA SCHOOL DISTRICT	63.9%	36.1%	0.0%	29.0%	N/A	78.3
3004000	MALVERN SCHOOL DISTRICT	49.2%	28.4%	0.6%	16.1%	N/A	84.9
1804000	MARION SCHOOL DISTRICT	66.6%	33.3%	1.7%	29.6%	N/A	78.5
5404000	MARVELL-ELAINE SCHOOL DISTRICT	91.3%	16.1%	3.2%	35.5%	N/A	81.7
2105000	MCGEHEE SCHOOL DISTRICT	53.5%	39.2%	3.3%	22.5%	N/A	78.3
3104000	MINERAL SPRINGS SCHOOL DISTRICT	84.9%	32.2%	0.0%	20.3%	N/A	82.5
1611000	NETTLETON SCHOOL DISTRICT	66.3%	36.0%	2.4%	14.0%	N/A	82.5
3403000	NEWPORT SCHOOL DISTRICT	49.7%	36.9%	2.7%	17.1%	N/A	81.1
6002000	NORTH LITTLE ROCK SCHOOL DISTRICT	74.3%	48.3%	1.6%	26.2%	N/A	74.6
4713000	OSCEOLA SCHOOL DISTRICT	89.8%	56.1%	0.0%	27.6%	N/A	72.1
3541700	PINE BLUFF LIGHTHOUSE ACADEMY	98.6%	94.4%	0.0%	38.9%	N/A	55.6
3505000	PINE BLUFF SCHOOL DISTRICT	98.7%	34.9%	1.9%	24.1%	N/A	79.7
5006000	PRESCOTT SCHOOL DISTRICT	49.0%	44.7%	0.8%	28.5%	N/A	75.3
6003000	PULASKI COUNTY SPECIAL SCHOOL DISTRICT	60.8%	77.3%	3.3%	18.9%	N/A	66.8
6053700	RESPONSIVE ED SOLUTIONS PREM. HS OF LITTLE ROCK	92.0%	100.0%	0.0%	60.0%	N/A	46.7
6062700	RESPONSIVE ED SOLUTIONS PREM. HS OF NLR	70.6%	100.0%	0.0%	0.0%	N/A	66.7
0405000	ROGERS SCHOOL DISTRICT	57.1%	16.3%	5.0%	12.9%	N/A	88.6
6060700	SCHOLARMADE ACHIEVEMENT PLACE OF ARKANSAS	99.7%	100.0%	0.0%	62.9%	N/A	45.7
7207000	SPRINGDALE SCHOOL DISTRICT	67.7%	18.3%	1.5%	16.2%	N/A	88.0
7009000	STRONG-HUTTIG SCHOOL DISTRICT	79.9%	35.0%	2.5%	10.0%	N/A	84.2
0104000	STUTTGART SCHOOL DISTRICT	58.9%	54.6%	1.5%	20.9%	N/A	74.3
4605000	TEXARKANA SCHOOL DISTRICT	65.8%	45.9%	1.5%	23.0%	N/A	76.5
6058700	THE EXCEL CENTER	85.0%	57.1%	0.0%	57.1%	N/A	61.9
0602000	WARREN SCHOOL DISTRICT	62.3%	39.9%	1.3%	15.7%	N/A	81.0
3509000	WATSON CHAPEL SCHOOL DISTRICT	88.8%	37.9%	0.5%	17.4%	N/A	81.4
1803000	WEST MEMPHIS SCHOOL DISTRICT	79.6%	23.9%	0.5%	17.1%	N/A	86.2