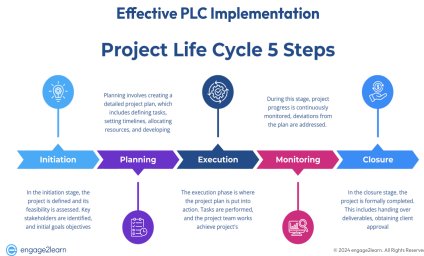


## Focus Area: Instructional Quality

At engage2learn, we've transformed the pursuit of improved student outcomes into a precise science. Since 2011, our evidence-based interventions and research-driven implementation strategies have consistently accelerated achievement across hundreds of districts nationwide. Our comprehensive services include multilingual learner program support, school improvement, Science of Reading implementation, instructional coaching, leadership development, and strategic planning. Each of these services delivers high-performance, job-embedded support, ensuring the effective implementation of instructional best practices.

### PLCs with a focus on Collaborative Planning around Unit and Lesson Preparation and Student Work Analysis

Recognizing the critical role that professional learning communities (PLCs) play in fostering positive cultural change and enhancing both student outcomes and teacher capacity, e2L offers tailored 1:1 coaching for campus instructional leaders and PLC coaching for teachers. By incorporating the science of coaching actions and skills, we provide customized support that builds leader and teacher capacity and ensures fidelity in the use of high-quality instructional materials (HQIM). We build capacity in instructional leaders through modeling and calibration to ensure that leaders may redeliver professional learning to other PLCs. e2L coaches have expertise in high-impact internalization protocol and a deep knowledge of the systems needed to support teachers in implementing effective HQIM protocols. These protocols focus on collaborative planning; which includes unit and lesson preparation practices and student work analysis.



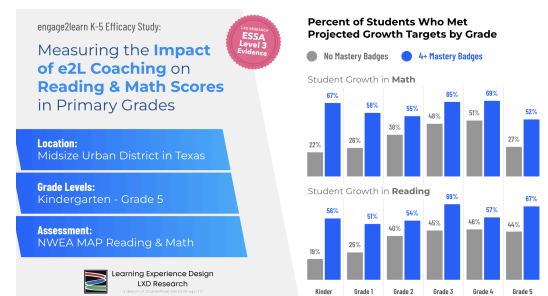
As campuses grow into deeper implementation of HQIM, e2L coaches will guide and support leaders in student work analysis protocols to build the capacity of the teacher team to analyze and develop instructional next steps with the intention to promote campus ownership of the process over time. As part of their coaching, campus leaders will also receive support from their e2L coach while conducting [observations](#) and providing feedback, as well as 1:1 coaching support on our HQIM Leaders Rubric. Our data platform, GroweLab®, offers real-time reporting that will enable leaders to immediately gauge the transfer of internalization and student work analysis protocols to student performance.

### High Quality Intervention Practices Aligned to Core Instruction

e2L supports leaders through coaching in creating systems where interventions are directly tied to core content and learning targets. Our PLC coaching system will directly support campus leaders to leverage analysis protocols and analyze data to inform decisions tailored to individual student needs, ensuring that interventions are directly aligned to core content and learning targets. e2L coaches have expertise in the aligned assessments of campus HQIMs, which will allow teams to ground their intervention plans in the upcoming units and lessons of their Tier 1 instruction. e2L will further support building knowledge of effective instructional moves and intervention practices through [synchronous and asynchronous virtual workshops](#) focused on pedagogical content knowledge and readiness.

### Using Assessment Data to Drive Instruction

Our Certified e2L Data-Informed Growth Coaches are experts in aligning curriculum, instruction, and assessment to educational standards and learning objectives. The diverse backgrounds on our coaching team include K-12 experience in every content area, experience with special needs students, ELL, dual language, CTE, early childhood, Advanced Placement, technology integration, and blended, personalized, project-based, and competency-based learning. By analyzing performance data from state standards, HQIM curriculum assessments, and universal screeners for math and literacy, we empower leaders to make informed instructional decisions.



During PLC coaching sessions, teams will set a goal around implementing HQIM assessments and analyzing student performance data, which can be tracked and monitored using GroweLab®, all-in-one coaching & educator support platform. As teachers grow in their instructional knowledge through coaching, they will be able to more skillfully prioritize future learning and assessments with an HQIM to make data-informed decisions. Through our research-based rubrics:

- [e2L Best Practice Rubric](#)®, [HQIM Teacher Rubric](#)®, [HQIM Leader Rubric](#)®

We offer a structured approach to professional growth, enabling coachees to build capacity and refine their practices through personalized coaching.

### Building Leadership Capacity to Support Implementation of HQIM

e2L coaches directly focus on ensuring that leaders master the content of PLC sessions, as well as gain insight into effective facilitation methods to turn around PLC learning. This happens both through shadowing the e2L coach for modeling, as well as calibrating facilitation with their coach to receive high-leverage feedback and support.

### 4 Key Components of engage2learn Data Informed Growth Coaching Process that Our Partner Districts Love and Trust

Coaching Model Agnostic	Competency-Focused Goals	Evidence of Implementation	Connection to Outcomes Data
Systems, protocols, and documentation tools streamline and scale the impact of 1:1, PLC, and observation-based coaching models.	Research-based, nationally normed, and leveled competencies are a framework to scaffold and guide professional growth.	Job-embedded, individualized, and actionable coaching leverages documented evidence to verify growth from coaching improved practice in the classroom.	All coaching activity is documented in <a href="#">GroweLab</a> . Growth data is connected to student and staff outcomes to measure, quantify, and report coaching effectiveness.

### Increasing Acceleration Opportunities and Student Outcomes

Many districts rely on e2L for support in achieving their educational goals. With guidance from e2L coaches, thousands of educators, leaders, instructional coaches, and staff have gained the tools, resources, best practices, and motivation needed to overcome challenges. e2L helps schools meet their growth objectives through various professional learning opportunities, including:

- Establishing goals around implementing High-Quality Instructional Materials (HQIM) utilizing research-based rubrics such as the following examples:
  - [e2L Best Practice Rubric](#)®, [HQIM Teacher Rubric](#)®, [HQIM Leader Rubric](#)®
- Analyzing student performance data, which can be tracked and monitored using GroweLab®, our all-in-one coaching and educator support platform

### Access to Core HQIM for All Learners

The diverse backgrounds on our coaching team include K-12 experience in every content area, experience with special needs students, ELL, dual language, CTE, early childhood, Advanced Placement, technology integration, and blended, personalized, project-based, and competency-based learning. engage2Learn (e2L) ensures that all learners have equitable access to inclusive high-quality instructional materials (HQIM) through a comprehensive approach that includes customized coaching in PLCs aligned with research-based instructional strategies to support teachers' skillful use of materials. This approach aims to strengthen Tier 1 instruction, benefiting all students by providing educators with tailored guidance and tools to address diverse learning needs effectively. e2L helps educators leverage information from student-specific learning plans (such as IEPs, 504 Plans, and LEP Plans) to strategically plan and deliver accommodations that increase access to grade-level learning.

### Specialized Support for Quality Access

Through customized coaching support systems grounded in the effective use of HQIM, e2L supports educators by ensuring specialized support for quality access through inclusive content. This includes things such as, but not limited to communication, assistive technology, functional skills, executive functions and self-regulation.

### Demonstrate Understanding of the Principles of High-Quality Professional Learning



We integrate the science of coaching, based on 10 years of validated, peer-reviewed research from esteemed professors at Rutgers and Arizona State Universities on the most effective instructional coaching strategies within this process. As leaders engage in the Data Informed Growth process, they will refine their skill in providing effective feedback and grow their capacity to coach on HQIM implementation.